

# West Haven Voice

March 27, 2025

Vol. 30, Issue 6, 20 Pages

## Voice Feature

An in-depth feature

Mayor's proposed  
budget for FY 2026

See page 13-16



## Budget hearing set for April 3

City residents get their one and only opportunity to critique Mayor Dorinda Borer's second budget proposal as the city's chief executive as the City Council will meet in special session on Thursday, April 3 at 6:30 p.m. at West Haven High School, 1 McDonough Way.

The major revenues and expenditures are detailed in today's edition, beginning on pages 13-16.

The \$187.5 million spending plan considers the recent revaluation required by state statutes, which saw real property values balloon some 56%, according to Mayor Borer. In an open letter in this week's edition (see page 7) she outlines the progress accomplished by her administration in the past year, and what is hoped to be accomplished in the new fiscal

year, beginning July 1.

Of most importance to city property owners, the budget is increased by approximately \$5 million over the current fiscal year, due to inflation and other economic pressures. The rise is only 2.6%, according to the mayor.

Given the revaluation numbers, Borer said a decrease in the mill rate, somewhat commensurate with the rise in property values, is reflected in the budget.

"To mitigate the impact, we lowered the mill rate from 36.57 to 25.76 and reduced the Allingtown mill rate from 11 to 8," she writes. The Fire Dept. of West Haven—Allingtown is under the aegis of the city, while the other two departments, First Taxation District (Center) and the West Shore Fire Department

remain independent. Those entities will announce their proposed budgets to be finalized in May over the next several weeks.

A homeowner can expect a tax of \$25.76 per thousand of assessed value as the tax for the coming year, not including fire taxes.

The breakdown of this year's budget sees the Education Department getting \$93.8 million to operate the school system in FY2026. This is a total \$.17 million increase over the current year.

The annual public hearing is the only public act of the City Council, which then does a total review of the spending plan over the next four weeks, before a final budget ordinance is passed on the first Thurs-

See Budget, page 2

## Dargan is city's son of the Old Sod

By Michael P. Walsh

Special to the Voice

Mayor Dorinda Borer, a former three-term state representative, helped her friend and mentor Stephen D. "Steve" Dargan, a former 13-term state representative, reveal a Kelly green street sign designating City Hall Square as "Stephen D. Dargan Square" for the next year at West Haven's 32nd annual St. Patrick's Day Celebration on March 17.

For just the second time since the event began in 1992, and for the first time since Paul and Therese Gill were honored as West Haven's Irish Couple of the Year in 2007, the ceremony was held indoors because of rain.

In the cozy quarters of City Hall's Harriet C. North Community Room, Dargan, a second-generation Irish American, received gifts of appreciation, including an embroidered navy blue "Irishman of the Year" jacket, and remarks of praise from Borer commending the city's top Irishman for "dedicating his time and talents to our spirited Irish American community."

In addition to the mayor reading a proclamation citing Dargan's devotion to public service and "his vibrant heritage and culture," the festivities featured the unveiling of the street sign naming City Hall's Campbell Avenue entrance for the honoree until next year's celebration, when the lifelong Westie will pass his title to a fellow person of Irish ancestry.

Although the rectangular sign was revealed inside City Hall, it was later hung above the Campbell Avenue entrance.

At the start of the 55-minute program, last year's recipient, former West Haven school nurse Sandy McCauley, received her retired sign to take home.

The West Haven St. Patrick's Day Committee each year recognizes an Irish resident or couple who exemplifies service in the city's close-knit Irish community.

See Dargan, page 11

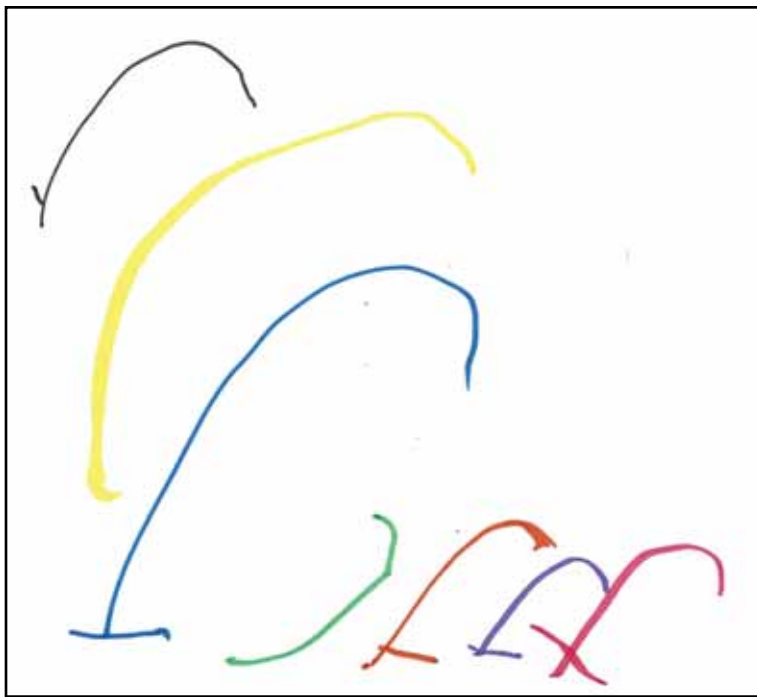


Photo by Michael P. Walsh

From left, state Sen. Martin M. Looney, state Comptroller Sean Scanlon and Mayor Dorinda Borer clap and cheer as West Haven Irishman of the Year Stephen D. "Steve" Dargan, assisted by grandnephew Pierce Dargan, 12, and grandniece Reagan Neal, 7, unveils his Kelly green street sign designating City Hall Square as "Stephen D. Dargan Square" for the next year at the 32nd annual St. Patrick's Day Celebration on March 17. The cultural event, presented by the West Haven St. Patrick's Day Committee in honor of Ireland's patron saint, was held in the Harriet C. North Community Room of City Hall because of rain.

# Watch your business GROW!

Contact us at  
[sales@westhavenvoice.com](mailto:sales@westhavenvoice.com)  
for details.



The West Haven Community House Head Start Preschool students are looking for rainbows this week and some warmer weather to go outside.

### Contact

#### West Haven Voice

West Haven Voice, LLC  
840 Boston Post Road, West Haven, CT 06516

203-934-NEWS (6397)      Web: westhavenvoice.com  
Facebook: whvoice      Twitter: @whvoiceads

Editor Bill Riccio info@westhavenvoice.com  
Sales Director Alan Olenick sales@westhavenvoice.com

Next Issue Date: April 4, 2025

### On this Date

1998 -- Viagra is approved by the U.S. Food and Drug Administration. Pfizer's pill was the first drug against male impotence to be approved in the United States. In 2012, the company made 2 billion U.S. Dollars from Viagra alone.

1994 -- Silvio Berlusconi rises to power in Italy. In his 20 years in Italian politics, Berlusconi arguably made more headlines for his numerous affairs and scandals than for his policies. In 2013, he was sentenced to 4 years imprisonment for tax fraud.

1980 -- The oil rig Alexander L. Kjelland collapses in high winds in the North Sea. Only 89 of 212 crew survived the Norwegian platform's capsizing, which was caused by a fatigue crack in one of the legs.

1977 -- The worst air crash in history occurs in Tenerife, Spain. Five hundred eighty-three people died when 2 Boeing 747 aircraft collided on the runway.

1871 -- England and Scotland compete in the first international rugby match. Rugby is a popular sport in the British Commonwealth.

### Budget: *Annual hearing announced for April 3*

Continued from page 1  
day of May. The entire procedure is outlined in this week's editor (See page 6).

Still to be determined once the City Council gives its go-ahead is the Municipal Accountability Review Board. Under the Tier IV designation the city has shouldered for the past several years, the budget, though passed by the City Council, must still be approved by MARB.

MARB has mentioned some concerns during the preliminary budget-making process, including its concerns about underfunded fire pensions in the city's independent fire districts.

Mayor Borer is hoping this is the last budget to go under official scrutiny by the panel, which has sat overseeing the city's finances since December of 2017.

In speaking of the goals the budget process looked to realize, Mayor Borer is upbeat.

"Using the updated grand list and responsible budgeting, we've significantly reduced mill rates while maintaining critical services like education, public safety, and infrastructure. Our financial stability is within reach, and I'm confident that, together, we'll achieve this goal," she wrote.

While the city is looking to finalize its own spending package, the ayor and other city officials are looking toward the state's own budget, which is not scheduled to be finalized until later this year.

She is hoping the state legislature will aid in so-called PILOT expenditures (Payments in Lieu of Taxes) to offset the untaxable properties that are found in West Haven.

"West Haven has one of the largest percentages of non-taxable properties in the state," she writes. "It is my hope that our State Delegation will support the City by advocating for a more favorable budget that increases state funding for non-taxable properties."

While the public has only one opportunity to speak at the scheduled public hearing, City Council budget sessions are open to the public, allowing residents to hear the deliberations.

## SIGMA ALPHA EPSILON FRATERNITY VOLUNTEERS AT VALENTINE'S DAY EVENT

Members of the University of New Haven's Sigma Alpha Epsilon fraternity recently joined in celebrating the spirit of love and community at the [City of West Haven's Valentine's Day Event](#), honoring both the [West Haven Senior Center](#) members and couples celebrating 50 years of marriage.

With enthusiasm and generosity, the fraternity brothers dedicated their time to make the occasion extra special for the seniors, serving lunch and offering their support as part of this heartwarming celebration.

This event symbolizes the fraternity's commitment to giving back and creating positive, lasting relationships with the local community.



City of West Haven Mayor Dorinda Borer with members of the SAE fraternity.

University of New Haven  
*A Partner in the Community*





Photo by Michael P. Walsh

University of New Haven President Jens Frederiksen, center left, and West Haven Mayor Dorinda Borer, center right, are joined at the news conference by West Haven public safety officials and UNH leaders.

# UNH, city partner for reponders, students

By Michael P. Walsh  
Special to the Voice

Mayor Dorinda Borer and University of New Haven President Jens Frederiksen held a news conference at City Hall on March 20 to announce a major town-gown partnership that will benefit West Haven first responders and high school graduates while strengthening the ongoing relationship between the city and the university.

Borer and Frederiksen, who were flanked by more than two dozen West Haven public safety officials and UNH leaders, heralded a number of university-funded initiatives that will support the continued success of the city and UNH, including free tuition for West Haven police officers, firefighters and 911 dispatchers.

The initiatives, negotiated by Borer and Frederiksen, were announced in the Harriet C. North Community Room of City Hall to rousing applause from first responders.

The new partnership will also include a 50% tuition discount for all high school graduates from West Haven, regardless of the high school they have attended and provided they have lived in the city for at least one year.

Currently, the 50% tuition discount is offered only to West Haven High School graduates and city employees.

“Beginning in the fall of 2025, every police officer, every firefighter, every 911 dispatcher will now be able to attend the University of New Haven covered

through a 100% scholarship offered by the University of New Haven,” said Borer, who noted that she and many first responders in attendance graduated from UNH.

Hide original message

“That is in excess of a \$150,000 unprecedented benefit for those in public safety who work for the city of West Haven,” Borer said. “What better place would our public safety personnel want to earn their bachelor’s degree or master’s other than a university who excels in forensic science, fire science, homeland security and international relations, and so much more.”

The mayor continued: “By providing this benefit, the university is investing in the same men and women that provide service to them every day. At the same time, it is an extremely attractive tool for our city to recruit, retain — and it also helps us to build morale, as we want our public safety officials to know we value the work they do every single day.”

Frederiksen said: “We are a university with a local feel and a global reach, so a lot of exciting things are happening. Obviously this partnership is near and dear to our heart because we want to showcase the value that we add to the West Haven community. From a university perspective, I’m sure you know it’s all about economic development, opportunity and brighter futures at a time where I think we all long for community and a sense of we know where we are going. This is a critical partnership that I think we will both tremendously benefit — of course pub-

lic safety personnel, city employees — but certainly also students. We want to recruit as many ‘Westies’ as we possibly can.”

Frederiksen added, “I’m just super-excited about this partnership and look forward to the future.”

Borer said to help boost enrollment for UNH and encourage participation in the tuition benefits, the city plans to send a mailer to residents.

At the morning announcement, Borer and Frederiksen were also joined by Superintendent of Schools Neil C. Cavallaro, who spoke about how the expanded tuition discount will have a positive impact on high school graduates from West Haven.

Police Chief Joseph S. Perno and West Haven Fire Department Chief James P. O’Brien spoke about investing in public safety and the “great relationship with the university.”

West Haven fire Capt. Jacob Urban, who is among many considering taking advantage of the new tuition-free benefit, called it a “win-win” for his department, saying, “This is something we can offer to new hires that puts us at the top of the list.”

Urban said he’s proud to demonstrate to his children the importance of taking the step to higher education.

Borer ended the news conference by announcing the university’s \$500,000 purchase of North End Field, a 3.2-acre city-owned property at 1101 Campbell Ave., just across from the main campus.

The purchase of North End Field complements  
**See UNH, page 10**



Submitted Photo

## Students of the Month

St. Lawrence School celebrated its Students of the Month for March. The students were cited for demonstrating how to Know, Love, and Serve God and one another. Left to right: Grade 7- Brielle, Grade 6- Isabella, Grade 5- Aria, Grade 4- Gabriel, Grade 3- Diego, Grade 2- Natalia, Grade 1- Jackson, with the Rev. Ricardo Borja and Principal Jim Messina.

Combine and get in on the surprise.



Encarnacion Ins Fin Svcs Inc  
Elsie Encarnacion, Agent  
487A Campbell Avenue  
West Haven, CT 06516  
Bus: 203-932-0591

Here’s the deal, our Home and Auto rates are already great. But when you combine with State Farm®, you can save even more. Call me to discover your surprisingly great rates on Home and Auto today.

Like a good neighbor, State Farm is there.®

Individual premiums will vary by customer. All applicants subject to State Farm underwriting requirements.

State Farm Mutual Automobile Insurance Company  
State Farm Indemnity Company  
State Farm Fire and Casualty Company  
State Farm General Insurance Company  
Bloomington, IL  
State Farm County Mutual Insurance Company of Texas  
State Farm Lloyds  
State Farm Florida Insurance Company  
Winter Haven, FL  
2001865



# Dear Felicia

By the time you read this missive, sweets, it'll be a week into the spring season. Yup, we've survived the winter again, and are lookin' forward to all that the spring and summer have to offer in these parts. Of course, yew know as well as I do that Ol Man Winter might've been extricated from his seat for nine more months, but he ain't gonna go away quietly.

Things don't really git warm around here until the first couple weeks of May. And, the damp and cold that we do have during April is something again. Still, whilst traversing around the neighborhood Cobina did seem to see the trees starting to show signs of budding. Willow trees are showing that greenish-yellow they have jest before changing to green, and we did see our foist crocus of the year. So, things are looking up.

Of course, the true sign of spring as far as the boys and girls of the political class are concerned is the opening of the budget approval process. That little exercise was done last week when Herroner called the City Council into special session and announced her spending plan for the next fiscal year, set to start July 1.

It was perty much pro forma as they say, with the usual remarks. She did put together a

bit of a statement that yew can read in this week's papyrus. It is the second year she is doin' that and it seems to be accepted well by the taxpayers cuz it is a sign of "transparency," a word much used in political circles of late.

This means the public hearing is set, and the papyrus has a run down of the major expenditures and revenue streams as it has for many years and in many publications going back to probably The Flood, maybe even antediluvian.

Sammy Bluejay was perched outside the meeting venue and was listening to the goings on. It was perty much what you'd expect, no real surprises one way or t'other. As Sammy sez it'll be interesting to see what happens at the public hearing this year, set for .... Over the last decade or so these things have become rather hum-dum affairs with none of the real fire and brimstone that used to accompany setch sessions.

Sammy and I were reminiscing about the days when the West Haven Taxpayers Association, formed in a year when there was revaluation perty much stormed into the public hearing and there was a lotta fiery talk. Stayed that way for quite a while, but no more. Havin' the city go belly-up financially kind o' takes the

raison d'être outta any type of public protest, and cuz we are in a Blue State high taxes and high costs are jest perty much expected as opposed to forty years ago. Now, people jest up and leave, going to greener and warmer pastures for lower taxes and less cost.

Still, it'll be of interest to see what happens in the public hearing given it is a revaluation year and peoples assessments will probably affect what they pay in the year. Stay tuned for what happens.

~~~

*The Wag came in t'other day and he was as annoyed as I'd ever seen him. It seems his gas-samobuggy was the victim of a driver who dinged him, leaving a bit o' damage, but not bothering to leave any contact info. Luckily, it wasn't th subject of a repair, just a quick fix.*

*He came to his car which is parked on the main drag every night and found that his car door was difficult to open and his side-view mirror was displaced. That was an easy fix cuz those things move nowadays, and there was not damage there. What damage there was happened to be with the door and adjacent panel. Luckily, his friendly neighborhood fixit man did his thing and was able to pull out the panel, and fix the door toot sweet. Still, the car is fairly new, and this is the thoid thing he's had happen to it in*

about a year.

*At the supermarket adjacent cars seem to forget there are neighbors and dinged both is doors. This last thing set him off about the way people jest don't follow rules or courtesy anymore, to which Cobina gave a big, "Nope, they don't."*

*This happens through red lights being conveniently ignored, or (what she sees each day she comes to the office) people ignoring turning signals and making turns whilst it's red. I guess thing that that only apply to people who want to follow the law.*

*Tennyrate, it's jest another example o' the way people don't care about their neighbors, jest themselves. And, don't git me started on drivers who wanna zigzag on the highway trying to go 100 miles an hour when everyone else is going about 65.*

~~~

Nelly Nuthatch noted that the city is reclaiming sand along the various beaches. The city leadership was lookin' to reclaim sand that found its way back into Long Island Sound over the years, and permission must've been given cuz that's exactly what was done. That's a good thing. Over the years we've spent hundreds of thousands of kopecks on replacing sand, only to have it washed back into the drink.

It once was a matter of turning over Heaven and the hot place to try to get permits to reclaim the land. It looks like common sense is finally back in fashion, and the city can scoop back the sand and dry it out on the shore to put it back from whence it came.

Nelly sez that not only are city crews reclaiming the sand, they are caring it around to various beaches when the need for recontouring the shore is necessary.

Reclaiming sand is a step in the right direction, honey bunch. One has to remember that our beaches are all man-made, begun after WWII. We can remember a lotta rocky areas before that. But the sand issheew is much later. Remember, back in the 70s those jetties were constructed to help with shore preservation, and only made the situation worse. Forcing water into smaller areas doesn't slow down the process, it speeds it up.

Until those jetties are either modified or got rid of, the situation is probably gonna continue long past yew and I are here to see it.

~~~

*Circling back to the budget for a second, there is a feeling amongst one or two of the local politicians that the MARB, otherwise known as the Municipal Accountability Review Board, maybe stalling its exit. After seven years, one would*

*think the members would be happy to wish us good luck and move on to other things. But, no.*

*The latest "snag" seems to be about things the city really doesn't have control over – the pensions of the remaining two independent fire districts. Now, everyone knows the pensions are the foist thing to git cut when budget-makers are looking to keep levies down. So, the pensions are not fully funded. Natchurly, this is a cause for some concern, but only effen everyone retired at the same time. The worry is that effen the districts face hard times the city would be left holding the financial bag. That probably ain't gonna happen anytime soon. Whilst MARB wants a consolidation with the FDs under city control, that ship has left the port and ain't returning anytime soon.*

*This "problem," so called, is a matter that some are wondering effen the boys and gurls on the MARB are looking to hang around. As one person was hoid to say, "They have nowhere else to go." There were only two towns under the MARB for a while, and effen they leave, the little sinecure they have goes with them.*

*Now, I don't know if that's the case, but we do know power is a heady thing, and the fact that people have plenary power makes it a hard thing to get rid of or let go. This reticence to leave our friendly confines probably has more to do with that.*

*Nobody wants to see the MARB in the rearview mirror more than the third floor of the Actors Colony or the City Council. And, the faster they go, the faster we get back to seeing effen we can govern ourselves again. Keep yore eye on this. It could git interesting.*

~~~

*Sooo, Stiles School will be made into about 30 apartments. No surprise there. The biggest surprise is that it hasn't happened sooner. Making former municipal buildings, churches and armories into apartments has been the rage for decades. The good part is the buildings aren't torn down, the bad is that more apartments using more city infrastructure happens. It's been a problem in this burg for decades.*

*Still, no one can claim surprise over this. That was the way the city was gonna be able to unload the building, which hasn't seen a student in about 20 years.*

~~~

*Jest to make it official. It's been three weeks since our last missive and the former Haven property is no closer to being developed, sold or otherwise disposed of than it was in the last 11 years. No one knows what's gonna happen, but at this rate, it'll be years*

*With that bit o' chatter, I'll close, mitt luff und kizzez,*

*Cobina*

## SHORT ON CASH??

# TURN YOUR UNUSED GOLD INTO CASH

**HIGHEST  
PRICES  
PAID!**

**HIGHEST  
PRICES  
PAID!**

- No Item Too Large Or Small
- 10k, 14k, 18k, Dental, Sterling
- On Site Testing While You Wait
- Licensed Buyer For Over 30 Years
- Immediate Payment
- Any Condition

## Leslie Jewelers

**27 Wagner Place**  
**203-933-3291**  
Visit us on the web - [www.lesliesjewelers.com](http://www.lesliesjewelers.com)

**Friendly Service Provided Here!**

**Family Owned And Operated**

# Sandy Point Assn. joins with Savin Rock School to aid students' garden

With guidance from the members of the Sandy Point Neighborhood Association (SPNA), students at Savin Rock Community School are taking action to restore nature in their school garden. Through a \$500 grant from the Wild Ones' Lorrie Otto Seeds for Education Grant Program, students and SPNA members are planting a native garden at the entrance to the school.

The garden will provide habitat for pollinators, songbirds, and other wildlife as students learn first-hand how native plants help protect biodiversity, improve water and air quality, and build climate resilience.

Wild Ones' vision is native plants and natural landscapes in every community, and programs like Seeds for Education help make that vision a reality by supporting youth-led projects that restore habitat while nurturing the next generation of environmental stewards.

The Seeds for Education program honors Lorrie Otto, who pioneered the school garden movement in the Milwaukee area in the 1970s. For nearly 30 years, Wild Ones has awarded Seeds for Education grants to organizations for acquiring native plants and seeds for outdoor learning areas that directly engage youth in planning, planting, and caring for native gardens.

Last July at Savin Rock Community School, volunteers from SPNA and Vertical Church removed overgrown, unattractive plants from the school's front garden and covered the area with cardboard, which was donated by Marcus Paper Company, and wood chips, which were donated by Bobby L Tree Service.

In January, SPNA members worked with students at the school on a winter seed sowing project to begin growing plants that will be moved into the garden in the spring. As the weather gets warmer, students, school staff, and SPNA volunteers will add native plants to the 30' x 35' area, creating a welcoming entrance to the school building as well as an outdoor classroom area for the community to enjoy.

"We are so excited to take the lead on this project," said Kathie Hebert, President of the Sandy Point Neighborhood Association. "Mr. Hunt, the principal, has been very welcoming, and we look forward to working with the students and Ms. Bergeron, their science teacher. This Wild Ones grant will be very helpful in purchasing the supplies we need."

"We are grateful to have received so much support from the community for this beautification project. The students and staff at Savin Rock Community School deserve a welcoming entrance to their school building, and this garden can also serve as an outdoor classroom where the students can learn about the importance of native plants and pollinators," said Bonnie Posick, secretary of the SPNA.

She said other projects are planned for the group over the next several months, including a grant through a Community Development Block Grant for a rain barrel pilot project.

For more information about the Sandy Point Neighborhood Association, visit [sandypointneighbors.org](http://sandypointneighbors.org) or email [sandypointneighbors@gmail.com](mailto:sandypointneighbors@gmail.com).



## C'MON SPRING BRUNCH!

**Sunday, March 30, 2025 9AM-NOON**

Location: 315 Morgan Lane, West Haven, CT 06516

**Suggested Contribution: \$25 per Person**

*Includes: Waffles, Pancakes and all the fixins, Bacon, Croissants, Muffins, Parfait Bar, Greek Yogurt, Fruits, Coffee, Tea, Juice, and more!*



Donate using QR Code above or TEXT "whrtc" TO (888) 444-8774.

*Paid for by the West Haven RTC - Angela L. Driver, Treasurer*

## News Briefs

### Blind support group meets April 11

Our Journey of Sight Is a low vision / blind support group that meets monthly at the West Haven Library at 300 Elm St. from 10 to noon, the third Friday of the month. This is not a regulatory group, but a group that provides monthly speakers, and give support to each other during our journey of visual loss.

Those interested can contact Richard C. Howard at (203) 214-7631 for more information. The next meeting is April 11.

### Summer work applications accepted

Applications for the Summer Youth Employment Program will be available from through-May 2 in the main entrance of West Haven High School and the main office of Bailey Middle School.

Applications are available on the city website for students who do not attend West Haven High or Bailey at <https://www.cityofwesthaven.com/DocumentCenter/View/7127/Summer-Youth-Employment-Program-Application-2025-PDF>.

The summer program, which begins July 7 and runs at least six weeks, is aimed at funding positions for city residents ages 14-21.

Students must return applications with all required documents to West Haven High from 7-8 a.m. Mondays, Wednesdays or Fridays or to Bailey from 8-9 a.m. Tuesdays or Thursdays. Online applications must be returned to West Haven High from 7-8 a.m. Mondays, Wednesdays or Fridays.

**Keenan Funeral Home**

**KEENAN**  
FUNERAL HOME, INC.

238 Elm Street  
West Haven, CT 06516

330 Notch Hill Rd  
North Branford, CT 06471

Every life is unique.  
Every goodbye, special.

Cremation

Burial

Veteran Services

**PREPLAN AND SAVE!!** CALL NOW: (203) 933-1217  
EMAIL US: [WeCare@KeenanFuneralHome.com](mailto:WeCare@KeenanFuneralHome.com)

★ ★ ★ ★ ★

"Keenan Funeral Home was truly amazing and very attentive to all of our needs. Thank you Keenan, for being there in our most painful time."

"I truly cannot say enough how grateful my family and I are to Keenan for their exceptional service. From the moment we met to make arrangements to the actual service, they were great. There was no financial pressures, our limits were respected, and everything was said outright."

Scan below to visit our website!!

## The budget procedure

With Mayor Dorinda Borer announcing her \$187.5M budget last week, the tedious, and what some would call "arcane" process of approval now takes place. Put in place when the city's charter went from a Board of Selectmen to a mayor=council form of governance, the process of approving a budget has had its dramatic moments.

The process has what can be termed "four steps:" the formal proposal of the budget by the mayor, the public hearing, the monthlong review by the City Council as a committee-of-the-whole, and adoption. Step one was completed last week with the formal proposal by Mayor Borer. The next step is the public hearing which was set for...

Once the public hearing is completed, the council goes under the leadership of the Chairman of the Finance Committee. A meeting date is set, and the review process begins. To facilitate things, the committee-of-the-whole, once in session does not adjourn until its work is complete, it only suspends the meeting to return to another date. This bypasses the need for a quorum during subsequent sessions once the quorum for the initial meeting is established.

The review is of all departments and is an open session, where the public may observe. It is not, however, a meeting that allows for public comments. Sometimes, department heads or other officials are called into the session to explain some line-item or expenditure. Other than that, the committee reviews the individual budgets and may be altered by means of a supermajority of the 13-member council. That means nine votes are needed to make changes.

This supermajority has been difficult at times to attain and has hampered the process in years when the spending plan has been particularly criticized. This requirement has been the subject of charter revision, but has not, for assorted reasons, been changed. It has been one of the myriads of reasons the city's financial picture has been marred by bad budgets, and the lack of alternatives offered by the council. The most egregious of these happened in the 1991 budget, when an 8-5 Democratic-Republican split on the council failed to make necessary changes. The result was a budget that was adopted by default (read below) that was \$17 million awash in red ink. It resulted in a state review of our finances for the next three years, the first such takeover.

Once the review process is completed, the process of adoption begins and must be completed by the first Thursday of May according to the charter. This last step is a simple ordinance passage by means of a simple majority. Failure to pass the ordinance (as happened in 1991) means the budget defaults to the original proposal made by the mayor with no alterations. This default first happened in that fateful year but has happened at least one more time since.

Because the city is under the Municipal Accountability Review Board (MARB), it must review the package before it can go into effect. The MARB has the right to make changes in the plan (which has been done over the years) before final approval.

Once approved, the plan goes into effect on July 1, the beginning of the new fiscal year.

Taxpayers should be aware of the process, and the various steps needed before the budget is adopted. The meeting on .. gives all of us an opportunity to take part, making our concerns heard.

The budget is the one document that affects all residents. Understanding the procedures is necessary to make informed comments and statements.



## Teslas aren't fascist vehicles

By Rich Lowry  
*Syndicated Columnist*  
Teslas aren't fascist vehicles

It's a trope to say that Donald Trump's opposition has been shell-shocked and rudderless in the wake of his election victory and his fast start out of the gate.

Not to fear, though. The Left has hit on its next big project -- an intifada against the country's largest maker of electric cars.

The progressive fear and loathing of Elon Musk now may be greater than that directed at Donald Trump. Since protestors don't have ready access to SpaceX's rockets or to Starlink's satellites -- absent finding a way to launch their own rival satellite network into space -- they're waging war on Tesla.

The heretofore trendsetting, eco-conscious vehicle for the affluent is now a hate object, a so-called "swasticar," the equivalent of a Volkswagen in 1930's Germany.

Everyone has a right to peacefully protest, of course, and to refuse to buy whatever products they wish. But when the Left engages in direct action, it's always a sign you should take steps to protect your property and person.

Teslas have been set on fire, spray-painted and otherwise damaged. Charging stations have been burned and dealerships vandalized. Shots were fired at a Tesla showroom in

Portland, Oregon. A woman in Colorado who attacked a Tesla dealership, including with a Molotov cocktail, was subsequently arrested near the location with more makeshift bombs in her car.

A Tesla charging station in South Carolina was also Molotov-cocktailed. The vandal spraypainted "LONG LIVE UKRAINE" on the ground. In Ukraine, they prepared Molotov cocktails to blunt the advance of Russian tanks closing in on Kyiv; in America, progressive activists use them to stick it to an entrepreneur whose politics they don't like.

Of course, Teslas have been painted with swastikas, as if a streamlined federal government is an indicator of incipient fascism. As always, the Left is bizarrely incapable of distinguishing between libertarianism -- Musk wants more freedom and less government -- and totalitarianism.

On the merits, the contrast between Musk and his enemies is a good one for him: He is the creator; they are the destroyers. That doesn't mean that the protests and mayhem aren't having an effect; Tesla sales had already been dropping, and the "Tesla Take-down" is likely to accelerate the trend.

Part of the point is intimidation. The agitation is meant to exact a price on Musk for DOGE and get him to abandon the effort, as well as to make

Tesla's workers and the company's consumers afraid. No one wants to buy an expensive vehicle and then become a political target or have their car vandalized.

Much mockery was directed at President Trump for touting the wonders of Teslas at a White House event, but the president was trying to counteract a campaign of harassment and vengeance directed at one of his top advisers, whom he believes is doing good and necessary work. Asked by a reporter if he'd consider the anti-Tesla violence domestic terrorism, Trump said, "Yes," and rightly so.

The Code of Federal Regulations defines terrorism as "the unlawful use of force and violence against persons or property to intimidate or coerce a government, the civilian population, or any segment thereof, in furtherance of political or social objectives." Part of the definition of domestic terrorism according to the Patriot Act is acts "dangerous to human life" intended "to influence the policy of a government by intimidation or coercion."

Musk enjoys being a provocateur. Yet, when he or his supporters talk of burning things down, they mean it metaphorically. His witless and inflamed enemies, on the other hand, are willing to lit

See Lowry, page 7

# Borer writes open letter to taxpayers

## Dear Residents,

Thank you for the opportunity to present the Fiscal Year 2026 Budget and 5-Year Capital Plan. As your Chief Elected Official, I am responsible for developing and managing the City and Allingtown Fire Department budgets, which the City Council reviews, adjusts, and approves. The West Shore and Center District budgets are managed separately by elected Commissioners, with residents voting on their recommendations in May.

### 2024: A Year in Review

When I took office, the City was behind on its 2022 and 2023 audits. In 2024, we caught up on both and completed the 2024 audit on time. Thanks to improved internal controls and government restructuring, we eliminated all material weaknesses, built a strong fund balance, and made strides in debt repayment. These efforts earned the City *three* investment-grade rating upgrades from Moody's and Standard & Poor's.

Key accomplishments in 2024 included:

~~ Finalizing Beach Street road improvements.

~~ Securing a lease to attract a top restaurant to the Savin Rock Conference Center.

~~ Helped to fast track the construction of the soon to be opened Beach Street destination, Riva.

~~ Facilitating the sale of the dilapidated Debonair Hotel and attracting a developer for the Stiles School property.

~~ Negotiating the sale of North End Field to UNH for \$500,000.

We secured significant grants, including:

~~ \$250K for a downtown plan.

~~ \$2M to upgrade the boardwalk and beaches.

~~ \$1.7M to transform Molloy School into a Community Center.

~~ Repurposing an old grant to finally launch the Masonic renovation.

~~ \$1.8M for beautification and safety improvements around the VA Hospital.

Revenue from all of these projects will be realized in Fiscal Year 2026.

Operational improvements included updated zoning regulations, streamlined hiring

processes, mandatory ethics and OSHA training, and the modernization of the Building Department to attract better commercial investments.

Public safety enhancements included:

~~ \$1M investment in security cameras across the City

~~ Upgrades to police communications, technology, and resources as well as fire department equipment.

~~ FREE tuition at UNH for public safety personnel starting in fall 2025.

We also hired a social worker to support seniors and youth and opened our first warming center for the unhoused.

### 2025 Budget

The state-mandated revaluation of all properties in West Haven has significantly increased home values. This process, based on recent neighborhood sales and home improvements, could not be phased in. While my budget increased, due to rising costs, by only 2.6%, the reassessment led to an average 56% increase in property values as compared to the last revaluation four years ago.

An equivalent percentage cut to the budget in comparison to rising home values is unattainable without impacting critical services. To mitigate the impact, we lowered the mill rate from 36.57 to 25.76 and reduced the Allingtown mill rate from 11 to 8. These adjustments will be reviewed and possibly further reduced by the City Council, veteran exemptions or senior tax freezes.

We also implemented cost-saving measures, such as negotiating better energy contracts, reducing City staff, modernizing operations (such as installing GPS on City vehicles, updating snow removal strategies) and reorganizing compost operations and leaf bag pickups.

Education remains a priority. Last year, we increased funding for the Board of Education for the first time in seven years. This year, we reduced their budget increase by \$1.7M through careful reviews, without impact to essential staff or services. This still leaves a \$1.8M increase requested by the Board of Education. This, in partnership

with the rising costs of health-care, and needing to catch up on long-ignored road and flood infrastructure projects, are the main drivers in the increase of this year's budget.

### Looking Ahead

By City Charter, the budget is due to the City Council by a certain date, and since then we have continued to assess and look for opportunities for savings. Through finalized contract negotiations, reassessment of annual costs, and a variety of other factors, we have identified an additional \$1.7 million in potential savings within the budget that we will provide to City Council for consideration.

Using the updated grand list and responsible budgeting, we've significantly reduced mill rates while maintaining critical services like education, public safety, and infrastructure. Our financial stability is within reach, and I'm confident that, together, we'll achieve this goal.

West Haven has one of the largest percentages of non-taxable properties in the state. It is my hope that our State Delegation will support the City by advocating for a more favorable budget that increases state funding for non-taxable properties.

Whether MARB will provide further input depends on our status when the budget is finalized.

Thank you for reviewing the

City and Allingtown budgets and for your continued support.

Sincerely,

Dorinda Borer

## Tax relief applications accepted

The assessor's office is accepting applications by appointment for tax relief programs for elderly and disabled homeowners.

West Haven residents can apply for the programs, based on their 2024 taxable and untaxable incomes, weekdays from through May 15 in the assessor's office on the first floor of City Hall, 355 Main St. For an appointment, call (203) 937-3515. No walk-ins.

The state offers a tax reduction benefit depending on income and marital status through the circuit breaker program. To qualify, the applicant or spouse must be 65 or older by Dec. 31, 2024, or permanently and totally disabled as defined by Social Security.

Income limits, including Social Security, are \$55,100 for married applicants and \$45,200 for a single applicant. Those eligible for the program must reapply every two years.

To qualify for the West Haven tax freeze program, the applicant must be age 70 by Dec. 31, 2024, and have lived in the city for at least 20 consecutive years with nobody under age 25 living in the home.

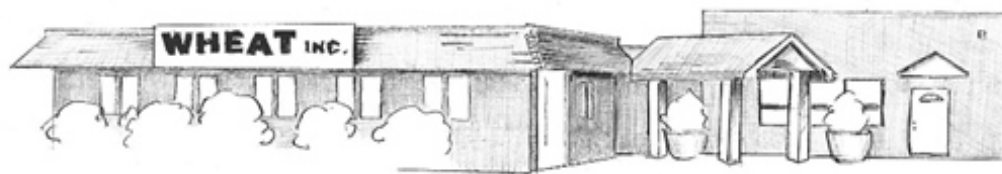
The program will freeze the city portion of the resident's taxes only for the upcoming year.

Income limits, excluding Social Security, are \$50,000 for married applicants and \$35,000 for a single applicant. Those eligible for the program must reapply annually.

The assessor's office is also accepting applications until Oct. 1 for additional veterans exemptions. The maximum income is \$55,100 for married applicants and \$45,200 for a single applicant.

For veterans who are 100% service connected, income limits are \$24,000 for married applicants and \$21,000 for a single applicant.

Social Security and veterans disability payments do not count for 100% disabled veterans only. All other ratings must include veterans disability payments and Social Security.



## WHEAT is now open Mondays too.

Our pantry is open:

Monday - 5:00-7:00 pm

Tuesday, Wednesday, & Thursday - 2:00-4:30 pm.

All CT residents are welcome, no appointment needed. Photo IDs and proof of address are not required. Visitors can come once a month to receive food and should bring their own grocery bags if possible.

WHEAT is looking for dedicated and compassionate volunteers to work in our pantry!

If interested email: [volunteer@wheatpantry.org](mailto:volunteer@wheatpantry.org)

## WHEAT

674 Washington Ave., West Haven

203-931-9877

[info@wheatpantry.org](mailto:info@wheatpantry.org)

## Lowry: A new lefty trope

Continued from page 6

erally burn things down. It is darkly amusing to see people for whom electric cars are necessary to saving the planet attack the most successful EV brand in the country and take out the kind of charging stations that President Biden labored so mightily and futilely to build.

The Left still doesn't have an answer to Donald Trump, but they've sure found a cudgel against one of American industry's most innovative products.

*Rich Lowry is editor of the National Review.*

*(c) 2025 by King Features Synd., Inc.*



# Historian's corner

By Dan Shine

## The Oak Hill Ladies Seminary

On April 3, 1843, Reverend Edward Wright became the pastor of First Church. He was newly graduated from the Yale Divinity School at the age of twenty-eight, and had recently married to Miss Susan Ames of Brattleboro, Vermont. His bride was a graduate of Mount Holyoke College and had been a teacher in Ohio.

While he was just a young boy, Rev. Wright's father had died. He had attended what is now Deerfield Academy and then apprenticed as a blacksmith. By the time he had completed his apprenticeship, a local clergyman had interested young Wright in the ministry. He entered Yale College, graduated, and went on

to attend the divinity school, graduating in 1843. Shortly thereafter, Rev. Wright went on to accept a position at First Church as pastor.

Mrs. Wright was a very unique person: Shortly after moving to West Haven she began her initial moves to develop some of her ideas about education for young ladies. In those times it was the exception for a girl to go to college and the norm was fundamentally a grade school education. Her dream was to create a school that would train girls to enter a wider range of activities than what existed for them in that era.

Starting in 1844, Mrs. Wright invited a young female relative to spend her summer with the Wrights, using the vacation

period for special tutoring. A West Haven girl of about the same age heard of the plan and asked to be allowed to share in it, and things began to snowball from there. By the end of that summer many applications were received for entrance to the program. In the fall of 1844, regular classes began to be held at the First Church parsonage on Savin Avenue.

According to promotional materials, all students had to be at least twelve years of age; boarding pupils were charged \$180 per year. Further, it read, "The order of studies includes Colburn's Arithmetic, Mitchell's Geography, History of the United States, English Grammar, Watts 'On The Mind,' Adam's Arithmetic, Instru-

mental Music, Vocal Music, Pencil Drawing and Pastel Painting."

As time passed and enrollment grew, the Wrights approached the First Church Ecclesiastical Society and arranged to buy a parcel of land owned by the Society on what is now Church Street Hill. On that tract of land was created a three-story structure which included living quarters for the Wrights and classrooms for the seminary. As far as we know the Oak Hill Seminary was in operation until 1870, offering a four-year course of study, and producing refined young ladies while making every effort to keep them in step with the times. A total of 668 students attended the seminary over the years.



Dan Shine is a columnist for the West Haven Voice, and local history buff

Several years after the school ceased its operation, the building caught fire and burned to the ground.

Rev. Wright was the principal of the seminary from 1843-1852 when he succumbed to typhus. It should also be noted that Rev. Wright aided greatly in the financing of the new school structure by selling shares in the school to church members.

Every Sunday the students of the seminary would march to church in a body, and attend worship as a group on the church's balcony.

We wish to acknowledge past West Haven historians Bob Shine and Harriet North, and Sara Pettinger of the West Haven Public Library and the West Haven Historical Society for helping provide the material for this story.



## West Haven Funeral Home

In this age of corporate-owned funeral homes, we are a family owned and operated establishment, proudly serving our community since 1965.

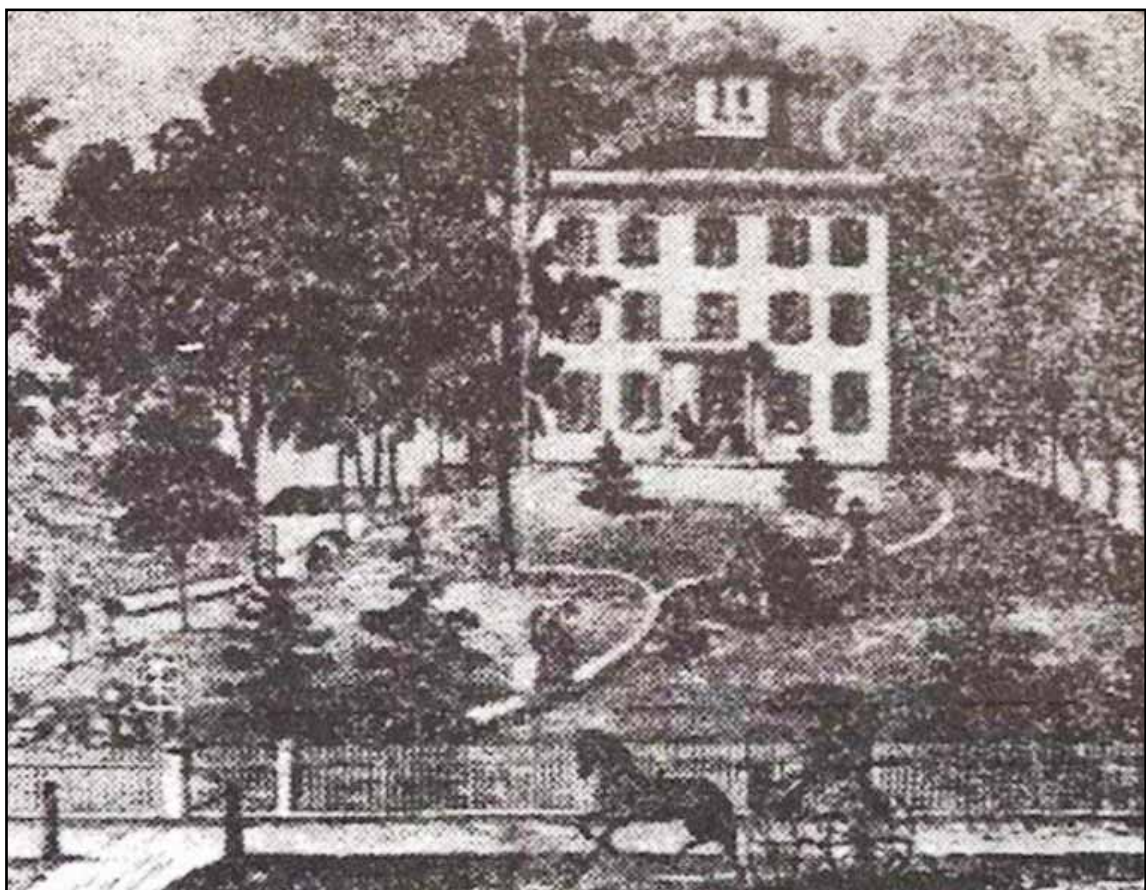
We provide a level of dignity, respect, personal care and attention to detail that is second-to-none. In your time of need, allow us to honor your loved one – not because this is our business, but because this is our way of life.

Celia Pinzi & James Stricker

Pre-Arrangements & Pre-Financing Available

662 Savin Avenue, West Haven, CT 06516 · Phone: (203) 934-7921

Email: office@westhavenfuneral.com · www.westhavenfuneral.com



Above left -- Some residents of the Oak Hill Seminary, circa 1870s. Above right -- A woodcut of the seminary grounds.



# HELP PREVENT SEWER BACKUPS

## How Can I Help Prevent Sewer Backups?

- Never pour grease down sink drains or into toilets or garbage disposals
- Pour grease and oil into a covered disposable container and put it in the trash **“Cool It - Can It - Trash It”**
- Soak up remaining fats, oil and grease with paper towels and dispose of with your trash
- Before you wash dishes, scrape meats and food with fat and grease into the trash
- Put baskets or strainers in sink drains to catch food scraps and other solids, and empty the drain basket or strainer into the trash
- Only use garbage disposals for fruits, vegetables and organic waste

### ***Properly Dispose of Household Grease***

**Most grease is a byproduct of cooking and is usually found in such things as:**

- food scraps
- meat fats
- lard
- cooking oil
- butter & margarine
- baked goods
- sauces
- dairy products

#### **PROTECT OUR ENVIRONMENT**

Keep Drains & Sewers Clear of Fats, Oils and Grease

Grease is one of the leading causes of sewer overflows.

***Never pour grease down the drain!***



**City of West Haven**  
**355 Main Street West**  
**Haven, CT 06516**  
**203-937-3637**  
 Paul Butler, ext 5116

**West Haven Seahawks**  
invite you to an egg-citing  
**EASTER BRUNCH & EGG HUNT**  
Food - Fun - Prizes  
APRIL 5TH | 9:00 - 11:00AM  
GERMAN-AMERICAN CLUB, 66 HIGHLAND ST. WEST HAVEN  
\$15 PER PERSON  
3 AND UNDER \$5  
Pancakes & Sausage will be served  
Egg Hunt is open to ages 4 and up  
Toddler Egg Hunt (3 and under) also available  
Raffles, Crafts & Special appearance from the Easter Bunny!

## UNH: Partnership offers responders free tuition

Continued from page 3

UNH's recent purchase of the adjacent former Railroad Salvage site, which sits on 12.1 acres.

The purchase, which will require City Council approval before it is finalized, is a field that has not been in use for more than a decade and has become an eyesore and a hazard.

"In addition to the \$500,000 revenue, we are taking a piece of property that is in disarray and nonrevenue-producing and turning it into a revenue-producing property, as the city will begin to receive PILOT funds in lieu of taxes each year from the state of Connecticut," Borer said. "We will no longer have a drain on our public works by monitoring and cleaning this field."

Frederiksen said the university plans to use North End for "recreational fields in the meantime."

## Behind the stacks

Welcome back to Behind the Stacks, your new go-to column from the West Haven Public Library! This week, we want to showcase a hidden gem in our collection, highlight some upcoming events, and share a letter from our director, including some much-anticipated updates about the Allingtown library.

Do we have any theatre buffs in town? Come browse our Amato Collection, located in our Reference Room! This collection boasts a variety of books, movies, and plays about theatre and the performing arts. This collection was made possible through a generous donation by the Amato family in loving memory of Anthony Amato. Stop by and browse the collection to look for your favorite play, an old classic, or to find something new. We will also have some of these items on display at the front desk for a couple of weeks to celebrate World Theatre Day.

Looking for something to do in April? We have plenty of fun and interesting events for kids and adults alike! Our all-ages chess program started up again on March 25th and will run weekly on Tuesday evenings through May 20th. Come in and learn the basics of chess and play against other people at your skill level. Later in April, we are thrilled to welcome author Bantouly Camara for a Basketball Storytime! We will also be having presentations on Edible Plants and Fungi, where you can learn foraging skills and recipes using these ingredients, and the Legacy of the Titanic, where you can learn facts and view rare images of the shipwreck. We have also been busy planning lots of events to keep the little ones and teens busy during the upcoming spring break, so be sure to check in at both of our locations to make the most of the break!

### Letter from the Director:

Greetings Westies! I wanted to share some updates and information about our library and libraries throughout the state this week. Did you know that most of the library's day to day funding comes from a mere 1% of the city's total budget? That 1% grants you access to all of our materials, programs, computers, hotspots and space plus the staff to help and assist you with a myriad of your needs. The remaining funding comes from grants, the state, and private donations. We are very fortunate that the governing body of the library, the Village Improvement Association (VIA), has a small endowment that pays for all the capital projects that can occur within our aging spaces. These funds pay for repairs such as our HVAC system, the elevator, and replacing technology in the library. Over the last 5 years, over \$650,000 has been spent from the endowment for upgrades and repairs. The VIA was founded in 1906 to help steer a campaign to build a library. We were fortunate to receive a Carnegie grant for the library project back in 1906, as well as donated land, of which the reference room of the Main Library is still in use today! Back then the VIA was also the beautification community for the city, with the original library location opening in September of 1909.

With your library card, you have access to so many services without ever having to step foot in our buildings (though we'd love to see you visit too!) You can read the NY Times from home, search business databases, and check out movies, music, eBooks and eAudiobooks. Speaking of eBooks and eAudiobooks, you may have noticed long wait times for books and that we don't have as many as we do their physical counterparts. This is because the library pays 3-10 times more for every book we purchase that's digital, and they automatically disappear after two years or 26 checkouts. It makes it very hard for us to build our collection further, and that's with us collaboratively buying these items with other libraries. For the past four years, the CT Library Association has been working with the state legislature to pass some laws that would ensure that publishers negotiate with libraries on the contracts for eBook terms. We all want to see authors compensated for their works, but we also want to be able to purchase as many digital copies of books for you as possible, which we currently cannot do. For everything else the library purchases from toilet paper to physical

See Stacks, page 12

## Engaging West Haven and surrounding towns for over 40 years

We have your:

Style Ring

Shape Diamond



Either a Natural Diamond or Lab Created Diamond

And surely one to fit your price

Visit Us for more details

Friendly Service  
Provided Here!

**Leslie Jewelers**  
27 Wagner Place, West Haven, CT  
203-933-3291

Family Owned  
And Operated

Business Hours: Tuesday - Friday 9 am - 5 pm;  
Saturday 9 am - 1 pm. Other hours by appointment

[www.lesliejewelers.com](http://www.lesliejewelers.com)



Photo by Michael P. Walsh

Mayor Dorinda Borer, the city's 2014 Irishwoman of the Year, reads and presents her friend and mentor Steve Dargan, the city's 2025 Irishman of the Year, with a proclamation declaring "Stephen D. Dargan Day" in West Haven.

# Dargan: Former official honored

Continued from page 1

Despite the rain — and revealing his May 2024 Stage 4 cancer diagnosis — Dargan showed off his signature sense of humor, cracking: "A great philosopher said, 'It's better to be inside than be outside wet,' "and that philosopher is me," drawing laughter from the capacity crowd, many donning Aran sweaters and other Irish garb.

As the sound of Celtic music played by bagpipers and drummers filled the room during the cultural event in honor of Ireland's patron saint, Dargan toasted his forebears with more than 100 of his closest friends and family members from near and afar, along with a sea of shamrock-clad dignitaries, including former and current political leaders and fire and police officials, and descendants of folks from the Emerald Isle.

Dargan, a longtime member of the West Haven Irish American Club and former member of the Knights of St. Patrick in New Haven, said he was grateful to receive the city's "Irish Person of the Year" award.

"I am overwhelmed because I know everyone here," said Dargan, who turns 70 on March 29. "You are my angels, you are my family. I love you, and thank you for being here on my behalf."

He and his siblings — Robert Dargan III, Timothy Dargan and Mary Margaret Dargan — were born and raised by their hard-working parents, Robert Dargan Jr. and the former Margaret Glacken, in a traditional Irish Catholic household on Richards Place in the center of West Haven. Steve Dargan attended public schools and graduated in 1973 from West Haven High School, where he ran track. He also attended Quinnipiac College.

The Irish Person of the Year distinction runs deep in Dargan's family. His father, now deceased, received the award in 2012. The Dargans are the first father and son to receive the honor. At the midday ceremony, Borer also presented an Irish flag to Dargan, a former sales representative and longtime resident of the city's Beach Street neighborhood.

He was accompanied onstage by grandnephew Pierce Dargan, 12, and grandniece Reagan Neal, 7, along with Mary Dargan, of West Haven, and Tim Dargan, of Chesterfield, New Jersey.

Robert Dargan, of Branford, was unable to attend.

Among those attending were 2025 Greater New Haven St. Patrick's Day Parade Grand Marshal Cathleen Patricia Steinau, of West Haven, Queen Keira Integlia, of Branford, and Honor Attendant Madison Morris, of Hamden. Other attendees included state Comptroller Sean Scanlon, state Sen. Martin M. Looney, D-New Haven, who has been the Senate president pro tempore since 2015, and former West Haven Mayors Edward M. O'Brien and H. Richard Borer Jr.

Borer issued laudatory remarks about Dargan, who represented West Haven's 115th District from 1991 to 2017 as a Democratic member of the state House. Dargan also served on the City Council from 1985 to 1991 and is a former member of the New York State Association of Fire Chiefs. He is a lifetime member of West Haven's Elks Lodge 1537. He served on the First Fire Taxation District's Board of Fire Commissioners from 1980 to 2004.



FROM OUR LOCAL BUSINESS TO YOURS, the account you need to grow and thrive.

Open a new business checking account with access to free cash management services, local banking experts, and more.

Receive a bonus of up to **\$500** when you open a new Business Checking Account.\*

Pressed for time? One of our local branch managers can meet you at your place of business to help you open your account.



Scan to find out more >



Open Today | 203.285.6490 | newhavenbank.com

\*Limited time offer. Only new business accounts opened with funds not currently on deposit at New Haven Bank will qualify. (1) Must enroll in business online banking; (2) Maintain stated minimum monthly average balances; (3) Complete minimum number of monthly qualifying transactions. Bonus amount will be credited to the account by the last business day of the statement cycle following the 6 months anniversary of account opening. (1) Online Banking Requirements: Enrollment in business online banking must be completed at time of account opening. (2) Balance Requirements: Maintain the average monthly balance required for six monthly statement cycles to earn bonus amount. Average monthly balances of \$100,000.00 or more will earn a \$500 bonus. Average monthly balances between \$50,000.00 and \$99,999.99 will earn a \$250 bonus. (3) Qualifying Transactions: Must complete 5 or more qualifying transactions per statement cycle for 6 months to include: Debit Card Purchases, Payroll Processing, Remote Deposit Capture (desktop or mobile), Incoming ACH or Wire credits, Recurring Electronic Payments, Other Electronic Payments to include Bill Payments, ACH Origination and Wire Origination.



## Evergreen Cemetery & Crematory We're Here When You Need Us!

- Cremation (Choose to be cremated at Evergreen.)
- Columbarium in the Most Beautiful Cremation Garden
  - Reserve your Niche in a secure location pre-need.
  - Reserve a Niche for family and friends or purchase a Niche at-need to safely secure your loved one in the Columbarium.
- Burial Lots (infant, single, two-grave, or four-grave)
- Monuments & Markers (black, gray, or pink granite)
- Flower program (single or multiple placement)
- All orders can be placed at the Evergreen office or on the website.

**769 Ella T. Grasso Boulevard, New Haven CT 06519**  
**203.624.5505 or evergreencem.org**



### GOP 9th District panel to meet

The Nine District Chas scheduled a meeting for the first Thursday of each month to search for new Republican Party members, and those who might want to get involved in the district, and town committee work. Teh goal is to increase the rolls and foster interest.

The meetings are scheduled for the Republican Town Committee Headquarters, 315 Morgan Lane an will be chaired by Anthony Vartuli. The next meeting is April 3.

Those interested may attend or get more information by calling DTC Chairman David Riccio at (475) 254-2361.



Photo by Michael P. Walsh

### Sami celebrates 90th

Sal's Barbershop owner Sami Ziada marks his 90th birthday and 70th anniversary in the haircutting business with Mayor Dorinda Borer, left, and his daughter and son-in-law, Adele and Porky Gaudino, during a celebration with customers, friends and loved ones at 451 Campbell Ave. on March 18. At the crowded party, organized by West Haven Business Alliance President Michelle Caprio, Borer presented Ziada with a mayoral citation for his "indelible contributions to the civic and cultural fabric of West Haven." Reading the citation, the mayor said: "Your good works have

shaped our local identity and have strengthened the diversity, character and vibrancy of our business community. Congratulations on your birthday and your platinum anniversary." Ziada thanked everyone for supporting him while reaching his milestones but conceded they were bittersweet because of his son's absence, former Z's Cafe owner John "Johnny Z" Ziada, who died of pancreatic cancer in 2022. With Sami Ziada beside her, Borer said, "I know Johnny has always been so proud of his father, and I'm sure he's smiling down on his beautiful family."



**TUESDAY, JUNE 3RD  
BRONX, NY**

**COST: \$138**

CASH, CHECK, OR MONEY ORDER MADE PAYABLE TO: WEST HAVEN SENIOR TRIP ACCOUNT

PAYMENT DUE: FRIDAY, APRIL 18TH

#### COST INCLUDES:

roundtrip transportation, driver gratuity, admission to the botanical gardens featuring the newly released Van Gough Exhibit and enjoying independent time to eat lunch and shop on Arthur Ave

#### ITINERARY:

**7:30 AM**  
Bus Arrival to Vertical Church, 225 Meloy Road, West Haven, CT 06516  
**8:00 AM**  
Bus Departs from Vertical Church  
**3:00 PM**  
Depart from New York

**TO MAKE YOUR RESERVATION: CALL (203)-937-3507**



**NON-WHSC MEMBERS & NON-RESIDENTS WELCOME**



**WE'RE HERE TO HELP YOU SAVE \$ ON YOUR ENERGY**

Contact us for a custom quote on your electric and/ or natural gas.

We'll also let you know if you qualify for a FREE energy audit.

**Contact:**  
MICHAEL HORTON  
Ph: 203-464-3163  
Fax: 860-436-3459  
mhorton@titanenergyne.com

2275 Silas Deane Hwy., Rocky Hill, CT 06067 | titanenergyne.com

### Behind the stacks

Continued from page 10

books, we buy the items with state and library discounts. There are many states throughout the country looking to pass similar eBook bills, but Connecticut seems to be the leader with this endeavor right now.

Please don't hesitate to contact me if you have more questions about this at (203) 937-4233 or dir@westhavenlibrary.org!

Finally, I know there has been a lot of speculation on what's happening with the

Allingtown Library since the Piantino Branch closed in September of 2020.

The library board and I have been working diligently over the last 5 years to reopen a new branch with 21st century technology, plenty of meeting space for large and small groups, and some added features such as a unique historical room, along with teen and children spaces.

The current city administration has also been extremely helpful with this project.

While we were disappointed that VIA's bid for the old location was never accepted, we look forward to opening a library in a new space in Allingtown with all the amenities West Haven residents want and need.

As always, please feel free to contact me or stop by the library at any time! Our space is your space!

Colleen Bailie,  
Executive Director of the  
West Haven Library



CT DCP Registration HCA-000807

Home care by Aides and Companions can be a low cost alternative to more expensive assisted living programs. We work to ensure our clients stay safe and healthy at home. We can help to identify needs before they become difficult and expensive to resolve.

Unlike most home care agencies, Aides and Companions Personal Care Aides receive monthly "in-service" training to help keep their skills honed. Most are graduates of state-certified training programs as well.

#### OUR SERVICES

- Live-In Care
- Showering - Dressing Assistance
- Daily/Weekly Visits
- Doctor's Visits
- Overnight Care
- Respite Care
- Activities of Daily Living
- Long Term - Short Term Service

CT Agency on Aging Provider

65 Elm St, West Haven  
**(203) 777-1234**

info@Aidesandcompanions.com  
Aidesandcompanions.com

# WEST HAVEN CITY COUNCIL LEGAL NOTICE/AGENDA

## PUBLIC HEARING FOR THE BUDGET FOR FY 2025-2026

### BUDGET SUMMARY AND CITY MILL RATE CALCULATION

|                                              | FY25<br>ADOPTED<br>BUDGET | FY26<br>DEPARTMENT<br>REQUEST | FY26<br>MAYOR'S REC.<br>BUDGET |
|----------------------------------------------|---------------------------|-------------------------------|--------------------------------|
| <b>GENERAL FUND</b>                          |                           |                               |                                |
| TOTAL EXPENDITURES                           | \$ 182,597,920            | \$ 190,790,902                | \$ 187,492,610                 |
| <b>Revenues</b>                              |                           |                               |                                |
| OPERATIONAL REVENUE                          | \$ 11,376,728             | \$ 10,690,058                 | \$ 11,089,758                  |
| FEDERAL & STATE GRANTS                       | \$ 56,710,418             | \$ 58,617,661                 | \$ 58,617,661                  |
| NON CURRENT TAXES                            | \$ 2,140,000              | \$ 1,980,000                  | \$ 1,980,000                   |
| CURRENT PROPERTY TAX LEVY                    | \$ 112,370,774            | \$ 119,503,183                | \$ 115,805,191                 |
| <b>TOTAL REVENUES</b>                        | <b>\$ 182,597,920</b>     | <b>\$ 190,790,902</b>         | <b>\$ 187,492,610</b>          |
| NET GL - MOTOR VEHICLE                       | \$ 373,547,775            | \$ 342,211,090                | \$ 342,211,090                 |
| NET GL - REAL ESTATE / PP                    | \$ 2,831,807,235          | \$ 4,265,789,043              | \$ 4,265,789,043               |
| <b>NET GRAND LIST</b>                        | <b>\$ 3,205,355,010</b>   | <b>\$ 4,608,000,133</b>       | <b>\$ 4,608,000,133</b>        |
| GROSS TAX LEVY - MV                          | \$ 10,963,627             | \$ 10,047,318                 | \$ 10,047,318                  |
| GROSS TAX LEVY - R/E, PP                     | \$ 103,234,314            | \$ 113,535,084                | \$ 109,454,052                 |
| <b>GROSS TAX LEVY</b>                        | <b>\$ 114,197,941</b>     | <b>\$ 123,582,402</b>         | <b>\$ 119,501,370</b>          |
| RESERVE FOR ELDERLY CREDITS                  | \$ -                      | \$ -                          | \$ -                           |
| <b>NET TAX LEVY</b>                          | <b>\$ 114,197,941</b>     | <b>\$ 123,582,402</b>         | <b>\$ 119,501,370</b>          |
| COLLECTION RATE MV                           | 98.40%                    | 82.00%                        | 85.00%                         |
| COLLECTION RATE RE/PP                        | 98.40%                    | 98.00%                        | 98.00%                         |
| <b>TOTAL CURRENT TAX</b>                     | <b>\$ 112,370,774</b>     | <b>\$ 119,503,183</b>         | <b>\$ 115,805,191</b>          |
| <b>CAPITAL &amp; NON-RECURRING</b>           |                           |                               |                                |
| Motor Vehicle                                | \$ 373,547,775            | \$ 342,211,090                | \$ 342,211,090                 |
| Real Estate/Personal Property                | \$ 2,831,807,235          | \$ 4,265,789,043              | \$ 4,265,789,043               |
| Net Grand List                               | \$ 3,205,355,010          | \$ 4,608,000,133              | \$ 4,608,000,133               |
| <b>CAPITAL &amp; NON-RECURRING</b>           | <b>\$ 360,200</b>         | <b>\$ 451,000</b>             | <b>\$ 451,000</b>              |
| <b>CAPITAL &amp; NON-RECURRING MILL RATE</b> | <b>0.11</b>               | <b>0.10</b>                   | <b>0.10</b>                    |
| <b>MILL RATE CALCULATION</b>                 |                           |                               |                                |
| GENERAL FUND MILL RATE - MV                  | 29.35                     | 26.62                         | 25.66                          |
| GENERAL FUND MILL RATE - R/E, PP             | 36.46                     | 26.62                         | 25.66                          |
| CAPITAL & NON-RECUR. MILL RATE               | 0.11                      | 0.10                          | 0.10                           |
| <b>TOTAL MILL RATE - MV</b>                  | <b>29.46</b>              | <b>26.72</b>                  | <b>25.76</b>                   |
| <b>TOTAL MILL RATE - R/E, PP</b>             | <b>36.57</b>              | <b>26.72</b>                  | <b>25.76</b>                   |
| <b>TAX REVENUE GENERATED PER 1 MILL</b>      | <b>\$ 3,154,069</b>       | <b>\$ 3,778,560</b>           | <b>\$ 3,916,800</b>            |

- FY26 MARB approved Planned Mill Rate: 37.39 (0.82 mill increase).
- FY26 Mill Rate: 25.76

### SEWER USE FEE CALCULATION

|                                                 | FY 25<br>ADOPTED<br>BUDGET | FY25<br>FEBRUARY ACTUAL | FY25<br>PROJECTION | FY 26<br>WPCC<br>REQUESTED | FY 26<br>MAYOR'S<br>RECOMM. | FY 26<br>PERCENT<br>CHANGE |
|-------------------------------------------------|----------------------------|-------------------------|--------------------|----------------------------|-----------------------------|----------------------------|
| TOTAL EXPENDITURES                              | \$ 13,402,604              | \$ 6,893,779            | \$ 13,012,057      | \$ 14,592,640              | \$ 14,273,940               | 6.50%                      |
| PRIOR YEAR SEWER LEVY                           | \$ 18,000                  | \$ 12,676               | \$ 15,000          | \$ 18,000                  | \$ 18,000                   | 0.00%                      |
| INTEREST & LIENS - CURRENT                      | \$ 20,000                  | \$ 28,854               | \$ 30,000          | \$ 20,000                  | \$ 20,000                   | 0.00%                      |
| INTEREST & LIENS - PRIOR YR                     | \$ 15,000                  | \$ 6,851                | \$ 10,000          | \$ 15,000                  | \$ 15,000                   | 0.00%                      |
| NITROGEN CREDITS                                | \$ -                       | \$ 4,775                | \$ 4,775           | \$ 3,000                   | \$ 3,000                    | 100.00%                    |
| FEES                                            | \$ -                       | \$ 1                    | \$ 2               | \$ 25,000                  | \$ 77,000                   |                            |
| ORANGE SHARE                                    | \$ 606,000                 | \$ 521,491              | \$ 576,000         | \$ 807,769                 | \$ 807,769                  | 33.30%                     |
| <b>TOTAL NON-TAX REVENUES</b>                   | <b>\$ 659,000</b>          | <b>\$ 574,650</b>       | <b>\$ 635,781</b>  | <b>\$ 888,769</b>          | <b>\$ 940,769</b>           | <b>42.76%</b>              |
| <b>AMOUNT TO BE RAISED<br/>BY SEWER USE FEE</b> | <b>\$ 12,743,604</b>       |                         |                    | <b>\$ 13,703,871</b>       | <b>\$ 13,333,171</b>        | <b>4.63%</b>               |
| COLLECTION RATE                                 | 98.50%                     |                         |                    | 98.50%                     | 98.50%                      | 0.00%                      |
| <b>GROSS SEWER USE LEVY</b>                     | <b>\$ 12,937,669</b>       |                         |                    | <b>\$ 13,912,560</b>       | <b>\$ 13,536,215</b>        | <b>4.63%</b>               |
| ESTIMATED # OF UNITS                            | 26,500                     |                         |                    | 26,500                     | 26,500                      | 0.00%                      |
| <b>SEWER USE RATE</b>                           | <b>\$ 488.00</b>           |                         |                    | <b>\$ 525.00</b>           | <b>\$ 511.00</b>            | <b>4.71%</b>               |

- Upgrades to the Sewer Plant were neglected for several years leaving investments to infrastructure now at a critical juncture. It is imperative that we invest in the necessary upgrades for the purpose of our sewer, our clean water, our regulatory requirements and the health of our residents.
- The modest increase of \$33 per household is in line with the 5-year plan approved in FY25.

IN ACCORDANCE WITH THE CITY CHARTER CHAPTER XIX, SECTION 4, THE CITY COUNCIL OF THE CITY OF WEST HAVEN WILL CONDUCT A PUBLIC HEARING ON

THURSDAY, APRIL 3, 2025 - 6:30 PM

WEST HAVEN HIGH SCHOOL  
1 MCDONOUGH PLAZA  
WEST HAVEN, CT 06516

AT WHICH TIME ANY ELECTOR OR TAXPAYER MAY HAVE AN OPPORTUNITY TO BE HEARD REGARDING APPROPRIATIONS FOR FISCAL YEAR JULY 1, 2025 – JUNE 30, 2026.

ELECTORS ARE ALSO HEREBY NOTIFIED OF THE RIGHT/POWER OF THE ELECTORATE IN REGARDS TO REFERENDUM IN ACCORDANCE WITH THE CITY CHARTER, CHAPTER XVIII.

MAYOR BORER'S RECOMMENDED BUDGET FOR FY 2025-2026 IN ITS ENTIRETY CAN BE FOUND ON THE CITY OF WEST HAVEN WEBSITE: [WWW.CITYOFWESTHAVEN.COM](http://WWW.CITYOFWESTHAVEN.COM)

Comment by mail to West Haven City Council, 355 Main Street, West Haven, CT 06516, or

email to: [cserrini@westhaven-ct.gov](mailto:cserrini@westhaven-ct.gov)

# West Haven City Council Notice of Special Meeting, April 3, 2025

## Summary of General Fund Revenues

| DESCRIPTION                                       | ADOPTED BUDGET | YTD ACTUAL REVENUE | PROJECTION REVENUE | DEPARTMENT REQUEST | MAYORS RECOMM. | % Change Mayor FY26 vs FY25 |
|---------------------------------------------------|----------------|--------------------|--------------------|--------------------|----------------|-----------------------------|
| <b>CURRENT PROPERTY TAX LEVY</b>                  |                |                    |                    |                    |                |                             |
| 10124041-41100 Tax Levy - Current Year - MV       | \$ 10,788,209  | \$ 8,884,120       | \$ 10,123,171      | \$ 10,047,318      | \$ 8,540,220   | -20.84%                     |
| 10124041-41100 Tax Levy - Current Year - R/E, PP  | \$ 101,582,565 | \$ 96,651,195      | \$ 101,537,648     | \$ 113,073,560     | \$ 107,264,971 | 5.99%                       |
| Subtotal                                          | \$ 112,370,774 | \$ 105,535,315     | \$ 111,660,819     | \$ 123,120,877     | \$ 115,805,191 | 3.06%                       |
| <b>NON CURRENT TAXES</b>                          |                |                    |                    |                    |                |                             |
| 10124041-41101 Motor Vehicle Supplement           | \$ 1,300,000   | \$ 1,067,893       | \$ 1,256,777       | \$ 1,150,000       | \$ 1,150,000   | -11.54%                     |
| 10124041-41110 Out of State License Plates        | \$ 90,000      | \$ -               | \$ -               | \$ 60,000          | \$ 60,000      | -33.33%                     |
| 10124041-41200 Tax Levy - Prior Years             | \$ 600,000     | \$ 830,957         | \$ 850,000         | \$ 620,000         | \$ 620,000     | 3.33%                       |
| 10124041-41300 Tax Levy - Suspense                | \$ 150,000     | \$ 134,067         | \$ 250,000         | \$ 150,000         | \$ 150,000     | 0.00%                       |
| Subtotal                                          | \$ 2,140,000   | \$ 2,032,917       | \$ 2,356,777       | \$ 1,980,000       | \$ 1,980,000   | -7.48%                      |
| <b>INTEREST &amp; LIEN FEES</b>                   |                |                    |                    |                    |                |                             |
| 10124041-41610 Tax Interest - Current Year        | \$ 500,000     | \$ 228,877         | \$ 500,000         | \$ 500,000         | \$ 500,000     | 0.00%                       |
| 10124041-41620 Tax Interest - Prior Years         | \$ 308,000     | \$ 315,196         | \$ 375,000         | \$ 358,000         | \$ 358,000     | 16.23%                      |
| 10124041-41630 Tax Interest - Suspense            | \$ 150,000     | \$ 116,470         | \$ 200,000         | \$ 200,000         | \$ 200,000     | 33.33%                      |
| Subtotal                                          | \$ 958,000     | \$ 660,543         | \$ 1,075,000       | \$ 1,058,000       | \$ 1,058,000   | 10.44%                      |
| <b>LICENSES &amp; PERMITS</b>                     |                |                    |                    |                    |                |                             |
| 10112542-42150 Animal Licenses                    | \$ 6,000       | \$ 3,007           | \$ 6,000           | \$ 6,000           | \$ 5,000       | -16.67%                     |
| 10112542-42160 Marriage Licenses                  | \$ 10,000      | \$ 6,196           | \$ 10,000          | \$ 10,000          | \$ 8,000       | -20.00%                     |
| 10112542-42170 Sporting Licenses                  | \$ 250         | \$ 29              | \$ 250             | \$ 250             | \$ 250         | 0.00%                       |
| 10119042-42210 Building Permits                   | \$ 1,900,000   | \$ 856,947         | \$ 1,300,000       | \$ 1,100,000       | \$ 1,300,000   | -31.58%                     |
| 10119042-42220 Electrical Permits                 | \$ 350,000     | \$ 288,236         | \$ 350,000         | \$ 550,000         | \$ 375,000     | 7.14%                       |
| 10119042-42230 Excavation Permits                 | \$ 10,000      | \$ 7,375           | \$ 9,050           | \$ 10,000          | \$ 10,000      | 0.00%                       |
| 10119042-42240 Plumbing & Heating Permits         | \$ 100,000     | \$ 46,830          | \$ 71,725          | \$ 370,000         | \$ 100,000     | 0.00%                       |
| 10119042-42250 Zoning Permits                     | \$ 103,000     | \$ 33,055          | \$ 54,055          | \$ 64,000          | \$ 100,000     | -2.91%                      |
| 10131042-42110 Alcoholic Beverage License         | \$ 1,000       | \$ 720             | \$ 1,000           | \$ 1,000           | \$ 1,000       | 0.00%                       |
| 10131042-42130 Police & Protection Licenses       | \$ 27,000      | \$ 15,553          | \$ 27,000          | \$ 24,000          | \$ 24,000      | -11.11%                     |
| 10132042-42910 City Clerk Fees                    | \$ 6,000       | \$ 3,137           | \$ 6,000           | \$ 5,000           | \$ 5,000       | -16.67%                     |
| 10132042-42920 Dog Pound Releases                 | \$ 3,000       | \$ 1,398           | \$ 3,000           | \$ 3,000           | \$ 3,000       | 0.00%                       |
| 10153042-42120 Health Licenses                    | \$ 110,000     | \$ 74,891          | \$ 110,000         | \$ 90,000          | \$ 110,000     | 0.00%                       |
| Subtotal                                          | \$ 2,626,250   | \$ 1,337,375       | \$ 1,948,080       | \$ 2,233,250       | \$ 2,041,250   | -22.28%                     |
| <b>FINES, FORFEITS &amp; PENALTIES</b>            |                |                    |                    |                    |                |                             |
| 10131043-43100 Parking Tags                       | \$ 50,000      | \$ 60,877          | \$ 75,000          | \$ 50,000          | \$ 100,000     | 100.00%                     |
| 10124043-43200 Tax Fines                          | \$ 72,606      | \$ 67,309          | \$ 72,606          | \$ 65,000          | \$ 75,000      | 3.30%                       |
| 10124043-43250 Bldg Code Violations               | \$ 2,318       | \$ -               | \$ 1,300           | \$ 1,300           | \$ 3,000       | 29.42%                      |
| 10124043-43251 Non-Resident Landlord Registration | \$ 60,000      | \$ -               | \$ -               | \$ -               | \$ 40,000      | -33.33%                     |
| 10124043-43253 Blight Liens                       | \$ 65,000      | \$ 8,815           | \$ 8,818           | \$ -               | \$ 15,000      | -76.92%                     |
| Subtotal                                          | \$ 249,924     | \$ 137,001         | \$ 157,724         | \$ 116,300         | \$ 233,000     | -6.77%                      |
| <b>USE OF MONEY/PROPERTY</b>                      |                |                    |                    |                    |                |                             |
| 10120044-44100 Investment Income                  | \$ 2,291,000   | \$ 1,869,902       | \$ 2,800,000       | \$ 2,200,000       | \$ 2,200,000   | -3.97%                      |
| 10120044-44210 City Facility Rental               | \$ 28,000      | \$ 14,000          | \$ 21,000          | \$ 28,000          | \$ 28,000      | 0.00%                       |
| Subtotal                                          | \$ 2,319,000   | \$ 1,883,902       | \$ 2,821,000       | \$ 2,228,000       | \$ 2,228,000   | -3.92%                      |
| <b>FROM OTHER AGENCIES</b>                        |                |                    |                    |                    |                |                             |
| 10120045-45211 Educational Cost Sharing           | \$ 45,150,487  | \$ 20,699,652      | \$ 45,150,487      | \$ 45,150,487      | \$ 45,150,487  | 0.00%                       |
| 10120045-45219 Health Services                    | \$ 73,000      | \$ 46,224          | \$ 46,224          | \$ 46,224          | \$ 46,224      | -36.68%                     |
| 10120045-45231 Pilot-Colleges & Hospitals         | \$ 8,974,220   | \$ 9,199,262       | \$ 9,199,262       | \$ 9,862,688       | \$ 9,862,688   | 9.90%                       |
| 10120045-45233 Muni Rev Shr (Mfg Pr Tax Reli)     | \$ 147,516     | \$ -               | \$ 147,516         | \$ 147,516         | \$ 147,516     | 0.00%                       |
| 10120045-45249 Motor Vehicle Tax Reimbursement    | \$ 672,795     | \$ 1,057,209       | \$ 1,057,209       | \$ 1,730,247       | \$ 1,730,247   | 157.17%                     |
| 10120045-45235 Mashantucket Pequot Grant          | \$ 807,097     | \$ 269,032         | \$ 807,097         | \$ 807,097         | \$ 807,097     | 0.00%                       |
| 10120045-45236 Prop Tax Relief-Totally Disabl     | \$ 4,600       | \$ -               | \$ 4,600           | \$ 4,600           | \$ 4,600       | 0.00%                       |
| 10120045-45238 Property Tax Relief-Veterans       | \$ 110,000     | \$ -               | \$ 100,509         | \$ 100,000         | \$ 100,000     | -9.09%                      |
| 10120045-45248 Town Aid Road                      | \$ 621,029     | \$ 618,802         | \$ 618,802         | \$ 618,802         | \$ 618,802     | -0.36%                      |
| 10120045-45290 Misc.State/Fed Grants (ERS)        | \$ 149,674     | \$ 84,539          | \$ 149,674         | \$ 150,000         | \$ 150,000     | 0.22%                       |
| Subtotal                                          | \$ 56,710,418  | \$ 31,974,721      | \$ 57,281,380      | \$ 58,617,661      | \$ 58,617,661  | 3.36%                       |
| <b>CHARGES - CURRENT SERVICES</b>                 |                |                    |                    |                    |                |                             |
| 10112546-46940 Record Legal Instrument Fees       | \$ 1,555,000   | \$ 1,326,888       | \$ 1,555,000       | \$ 1,200,000       | \$ 1,300,000   | -16.40%                     |
| 10131046-46710 Police Charges                     | \$ 12,900      | \$ 18,851          | \$ 19,000          | \$ 20,000          | \$ 20,000      | 55.04%                      |
| 10120046-46952 Miscellaneous - General Gov't      | \$ 125,000     | \$ 22,367          | \$ 50,000          | \$ 30,000          | \$ 30,000      | -76.00%                     |
| 10120046-46956 Misc. - Parks & Recreation         | \$ 150,000     | \$ 120,528         | \$ 150,000         | \$ 375,000         | \$ 300,000     | 100.00%                     |
| 10140046-46953 All Other-Public Works             | \$ 13,000      | \$ 7,312           | \$ 13,000          | \$ 13,000          | \$ 13,000      | 0.00%                       |
| Subtotal                                          | \$ 1,855,900   | \$ 1,495,945       | \$ 1,787,000       | \$ 1,638,000       | \$ 1,663,000   | -10.39%                     |
| <b>OTHER REVENUES</b>                             |                |                    |                    |                    |                |                             |
| 10120045-45310 Telephone Access Grant             | \$ 79,000      | \$ -               | \$ 90,970          | \$ 90,970          | \$ 90,970      | 15.15%                      |
| 10120045-45340 SCCRWA-Pilot Grant                 | \$ 290,000     | \$ 310,478         | \$ 310,478         | \$ 290,000         | \$ 310,000     | 6.90%                       |
| 10120047-43300 Parking Meter Revenue              | \$ 330,000     | \$ 140,355         | \$ 275,000         | \$ 250,000         | \$ 280,000     | -15.15%                     |
| 10120047-47200 Sale of Property                   | \$ 300,000     | \$ 77,500          | \$ 577,500         | \$ 100,000         | \$ 500,000     | 66.67%                      |
| 10120047-47350 Pilot - Housing Authority          | \$ 171,000     | \$ 182,524         | \$ 182,524         | \$ 183,000         | \$ 183,000     | 7.02%                       |
| 10120047-47360 Sewer Fee Collection Expenses      | \$ 55,200      | \$ -               | \$ 55,200          | \$ 175,000         | \$ 175,000     | 217.03%                     |
| 10120047-47365 Fire Service Administrative Fee    | \$ -           | \$ -               | \$ -               | \$ 100,000         | \$ 100,000     | 100.00%                     |
| 10120047-47800 Yale Contribution                  | \$ 550,000     | \$ 545,990         | \$ 545,990         | \$ 550,000         | \$ 550,000     | 0.00%                       |
| 10120047-47900 Miscellaneous                      | \$ 65,001      | \$ 31,326          | \$ 65,000          | \$ 65,000          | \$ 65,000      | 0.00%                       |
| 10120047-47904 Quigley/Yale Parking               | \$ 43,603      | \$ 29,069          | \$ 43,603          | \$ 43,603          | \$ 43,603      | 0.00%                       |
| 10120047-47907 Lease Payments Greenskies          | \$ -           | \$ 68,978          | \$ 91,630          | \$ 67,900          | \$ 67,900      | 100.00%                     |
| 10120047-47908 Lease Payments VCP/Malloy          | \$ -           | \$ 8,720           | \$ 10,900          | \$ 26,160          | \$ 26,160      | 100.00%                     |
| 10120047-44210 City Rental Fees                   | \$ -           | \$ -               | \$ -               | \$ 25,000          | \$ 25,000      | 100.00%                     |
| 10130047-47310 Fire Dept Share Of ERS             | \$ 860,000     | \$ 382,429         | \$ 860,000         | \$ 960,000         | \$ 960,000     | 11.63%                      |
| 10145047-47340 Organic Recycling Compost          | \$ 20,000      | \$ 8,185           | \$ 11,000          | \$ 11,000          | \$ 11,000      | -45.00%                     |
| Subtotal                                          | \$ 2,743,804   | \$ 1,785,553       | \$ 3,119,795       | \$ 2,937,633       | \$ 3,387,633   | 22.57%                      |
| <b>OTHER FINANCIAL SOURCES</b>                    |                |                    |                    |                    |                |                             |
| 10120048-48300 Residual Equity Transfers In       | \$ 200,000     | \$ -               | \$ 200,000         | \$ 200,000         | \$ 200,000     | 0.00%                       |
| 10120048-48500 Transfer From Sewer Oper Fund      | \$ 403,850     | \$ -               | \$ 295,000         | \$ 278,875         | \$ 278,875     | -30.95%                     |
| Subtotal                                          | \$ 603,850     | \$ -               | \$ 495,000         | \$ 478,875         | \$ 478,875     | -20.70%                     |
| Grand Total                                       | \$ 182,597,920 | \$ 146,843,272     | \$ 182,702,575     | \$ 194,408,596     | \$ 187,492,610 | 2.68%                       |

In the previous budget, the projected overall permit revenue from the Building Department was largely included under the "Building Permits" line item. This year, ancillary budgeting revenues have been distributed across other permit categories, such as electrical and plumbing.

## Summary of General Fund Expenditures

| DESCRIPTION                       | ADOPTED BUDGET | FEBRUARY ACTUAL EXPENSES | PROJECTION EXPENSES | DEPT REQUEST  | MAYOR RECOMM. | % Change FY26 vs FY25 |
|-----------------------------------|----------------|--------------------------|---------------------|---------------|---------------|-----------------------|
| <b>GENERAL GOVERNMENT</b>         |                |                          |                     |               |               |                       |
| City Council                      | \$ 63,700      | \$ 36,055                | \$ 63,700           | \$ 63,646     | \$ 75,200     | 18.05%                |
| Mayor's Office                    | \$ 409,178     | \$ 267,596               | \$ 388,138          | \$ 442,762    | \$ 442,412    | 8.12%                 |
| City Operations Department        | \$ -           | \$ -                     | \$ -                | \$ 1,426,647  | \$ 1,426,693  | -                     |
| Corporation Counsel               | \$ 686,426     | \$ 329,826               | \$ 685,426          | \$ 680,864    | \$ 676,864    | -1.39%                |
| Labor Relations & Personnel       | \$ 404,854     | \$ 215,975               | \$ 326,200          | \$ 434,389    | \$ 433,562    | 7.09%                 |
| Telephone - City                  | \$ 358,000     | \$ 219,856               | \$ 358,000          | \$ -          | \$ -          | -100.00%              |
| Town & City Clerk                 | \$ 435,942     | \$ 214,369               | \$ 435,942          | \$ 442,417    | \$ 448,656    | 2.92%                 |
| Registrar Of Voters               | \$ 234,633     | \$ 184,163               | \$ 234,633          | \$ 332,896    | \$ 243,720    | 3.87%                 |
| Probate Court                     | \$ 12,558      | \$ 5,414                 | \$ 12,558           | \$ 12,558     | \$ 12,558     | 0.00%                 |
| Subtotal                          | \$ 2,605,291   | \$ 1,473,254             | \$ 2,504,597        | \$ 3,836,179  | \$ 3,759,665  | 44.31%                |
| <b>PLANNING &amp; DEVELOPMENT</b> |                |                          |                     |               |               |                       |
| Planning & Development            | \$ 781,086     | \$ 362,152               | \$ 642,250          | \$ 1,045,531  | \$ 839,571    | 7.49%                 |
| Grants Administration             | \$ 308,968     | \$ 132,777               | \$ 202,000          | \$ 158,841    | \$ 162,841    | -47.30%               |
| Building Department               | \$ 572,304     | \$ 298,712               | \$ 471,900          | \$ 643,412    | \$ 595,212    | 4.00%                 |
| Subtotal                          | \$ 1,662,358   | \$ 793,642               | \$ 1,316,150        | \$ 1,847,784  | \$ 1,597,624  | -3.89%                |
| <b>FINANCE</b>                    |                |                          |                     |               |               |                       |
| Treasurer                         | \$ 7,600       | \$ 5,067                 | \$ 7,600            | \$ 7,600      | \$ 9,000      | 18.42%                |
| Finance/Comptroller               | \$ 1,446,694   | \$ 924,202               | \$ 1,384,870        | \$ 1,445,374  | \$ 1,445,374  | -0.09%                |
| Purchasing                        | \$ 317,825     | \$ 250,708               | \$ 317,800          | \$ 250,896    | \$ 243,896    | -23.26%               |
| Info. & Tech. / Data Processing   | \$ 862,690     | \$ 550,355               | \$ 774,095          | \$ -          | \$ -          | -100.00%              |
| Central Utilities                 | \$ 163,900     | \$ 101,731               | \$ 202,800          | \$ 174,000    | \$ 174,000    | 6.16%                 |
| Central Utilities                 | \$ -           | \$ -                     | \$ -                | \$ 2,621,692  | \$ 2,621,692  | -                     |
| Tax Assessment                    | \$ 544,907     | \$ 355,146               | \$ 564,565          | \$ 583,224    | \$ 564,237    | 3.55%                 |
| Board Of Assessment Appeals       | \$ 3,600       | \$ -                     | \$ 3,600            | \$ 3,600      | \$ 3,600      | 0.00%                 |
| Tax Collection                    | \$ 532,526     | \$ 317,301               | \$ 505,620          | \$ 542,444    | \$ 544,044    | 2.16%                 |
| Subtotal                          | \$ 3,879,742   | \$ 2,504,509             | \$ 3,760,950        | \$ 5,629,030  | \$ 5,605,843  | 44.49%                |
| <b>PUBLIC SAFETY</b>              |                |                          |                     |               |               |                       |
| Emergency Reporting System (ERS)  | \$ 2,235,662   | \$ 1,409,248             | \$ 2,385,719        | \$ 2,496,715  | \$ 2,363,815  | 5.73%                 |
| Public Safety Administration      | \$ 1,349,616   | \$ 812,590               | \$ 1,244,616        | \$ 1,226,176  | \$ 1,165,676  | -13.63%               |
| Public Safety Operations          | \$ 15,162,037  | \$ 10,285,015            | \$ 15,289,960       | \$ 15,523,198 | \$ 15,088,198 | -0.49%                |
| Public Safety Support             | \$ 1,274,701   | \$ 830,624               | \$ 1,272,867        | \$ 1,316,293  | \$ 1,281,793  | 0.56%                 |
| Animal Control                    | \$ 359,039     | \$ 259,524               | \$ 369,415          | \$ 373,834    | \$ 373,834    | 4.12%                 |
| Emergency Management              | \$ 84,525      | \$ 42,258                | \$ 81,750           | \$ 83,775     | \$ 93,775     | 10.94%                |
| Subtotal                          | \$ 20,465,580  | \$ 13,639,260            | \$ 20,644,327       | \$ 21,019,991 | \$ 20,367,091 | -0.48%                |
| <b>PUBLIC WORKS</b>               |                |                          |                     |               |               |                       |
| Administration                    | \$ 949,874     | \$ 494,696               | \$ 949,874          | \$ 1,372,000  | \$ 1,370,000  | 44.23%                |
| Bureau Of Engineering             | \$ 504,632     | \$ 130,968               | \$ 389,632          | \$ 504,632    | \$ 504,632    | 0.00%                 |
| Central Garage                    | \$ 1,479,222   | \$ 670,271               | \$ 1,301,473        | \$ 1,439,389  | \$ 1,293,741  | -12.54%               |
| Compost Site                      | \$ 47,200      | \$ 25,309                | \$ 45,000           | \$ 97,200     | \$ 70,000     | 48.31%                |
| Disposal Of Solid Waste           | \$ 4,446,072   | \$ 2,385,952             | \$ 4,446,072        | \$ 4,939,024  | \$ 4,809,024  | 8.16%                 |
| Grounds & Building, Maintenance   | \$ 1,728,221   | \$ 954,185               | \$ 1,749,798        | \$ 1,058,433  | \$ 999,805    | -42.15%               |
| Hwy & Park Maintenance            | \$ 5,009,568   | \$ 2                     |                     |               |               |                       |

# West Haven City Council Notice of Special Meeting, April 3, 2025

## Summary of Capital Requests

### FISCAL YEAR 2025-2026 CAPITAL PLAN

| Project Name                          | Project Description                                                                                  | Life | Source  | FY 2026   | FY 2027   | FY 2028   | FY 2029 | FY 2030   |
|---------------------------------------|------------------------------------------------------------------------------------------------------|------|---------|-----------|-----------|-----------|---------|-----------|
| <b>Board of Education</b>             |                                                                                                      |      |         |           |           |           |         |           |
| <b>Bailey Middle School</b>           |                                                                                                      |      |         |           |           |           |         |           |
| Code Compliant Fire Doors             | Upgrade doors to meet fire code compliance                                                           | 10   | Bonding | \$100,000 | \$100,000 | \$100,000 | \$0     | \$0       |
| Fire Alarm System                     | Replace the fire alarm system, which will be beyond its recommended life in 2030                     | 10   | Bonding | \$0       | \$0       | \$0       | \$0     | \$150,000 |
| <b>Bennet Rink</b>                    |                                                                                                      |      |         |           |           |           |         |           |
| Flooring                              | Floor replacement with piping                                                                        | 10   | Bonding | \$700,000 | \$0       | \$0       | \$0     | \$0       |
| <b>Carrigan Intermediate School</b>   |                                                                                                      |      |         |           |           |           |         |           |
| Electrical System upgrade and repairs | Replacement of electrical panels, breakers, light fixtures, devices, and circuits that fail testing. | 10   | Bonding | \$0       | \$0       | \$0       | \$0     | \$400,000 |
| <b>Mackrille Elementary School</b>    |                                                                                                      |      |         |           |           |           |         |           |
| Roof Replacement (City Share)         | City Share for roof replacement                                                                      | 15   | Bonding | \$468,000 | \$0       | \$0       | \$0     | \$0       |
| <b>Pagels Elementary School</b>       |                                                                                                      |      |         |           |           |           |         |           |
| Roof Replacement (City Share)         | City Share for roof replacement                                                                      | 15   | Bonding | \$460,000 | \$0       | \$0       | \$0     | \$0       |
| <b>Seth Haley Elementary School</b>   |                                                                                                      |      |         |           |           |           |         |           |
| Roof Replacement (City Share)         | City Share for roof replacement                                                                      | 15   | Bonding | \$0       | \$550,000 | \$0       | \$0     | \$0       |

| Project Name                                                    | Project Description                                                                                             | Life | Source  | FY 2026     | FY 2027     | FY 2028     | FY 2029     | FY 2030     |
|-----------------------------------------------------------------|-----------------------------------------------------------------------------------------------------------------|------|---------|-------------|-------------|-------------|-------------|-------------|
| <b>District-Wide</b>                                            |                                                                                                                 |      |         |             |             |             |             |             |
| Asbestos abatement and removal                                  | Remove and abate asbestos as repair/renovation projects occur                                                   | 10   | Bonding | \$200,000   | \$0         | \$200,000   | \$0         | \$100,000   |
| Technology upgrades/infrastructure upgrades                     | Ongoing upgrade and replacement of IT equipment and other teaching tools                                        | 5    | Bonding | \$1,200,000 | \$1,068,000 | \$1,000,000 | \$1,000,000 | \$1,400,000 |
| Accessibility Improvements                                      | Handicap work, including ramps, sidewalks and curb cuts. Furnish and install grab bars, ADA hardware as needed. | 10   | Bonding | \$0         | \$0         | \$250,000   | \$0         | \$100,000   |
| Code compliance-Emergency Lighting-Fire Panels-Sprinklers       | Backup lighting, fire panels and sprinklers are functional and meet fire safety regulations                     | 10   | Bonding | \$0         | \$0         | \$150,000   | \$0         | \$0         |
| Electrical System upgrades                                      | Electrical infrastructure upgrades to support new technology projects                                           | 10   | Bonding | \$108,000   | \$0         | \$108,000   | \$0         | \$0         |
| Security upgrades / communications                              | Maintaining and upgrading surveillance cameras, metal detectors and other safety measures                       | 15   | Bonding | \$0         | \$0         | \$0         | \$0         | \$100,000   |
| Exterior masonry repair                                         | Repointing of brick facades and replacement of lintels to eliminate leaks.                                      | 10   | Bonding | \$0         | \$0         | \$100,000   | \$0         | \$0         |
| Floor Cleaning Equipment Replacement                            | To replace outdated floor cleaning equipment                                                                    | 10   | Bonding | \$30,000    | \$0         | \$30,000    | \$0         | \$0         |
| Hardscape                                                       | Paving, drainage and sidewalk work (any playground equipment?)                                                  | 20   | Bonding | \$0         | \$250,000   | \$250,000   | \$50,000    | \$0         |
| HVAC improvements                                               | Upgrade and replace outdated HVAC equipment at various schools                                                  | 10   | Bonding | \$0         | \$0         | \$0         | \$1,000,000 | \$0         |
| <b>Vehicle - Light Duty</b>                                     |                                                                                                                 |      |         |             |             |             |             |             |
| Purchase of New Vehicle for Maintenance or other BOE Department | Update and replace trucks for BOE fleet                                                                         | 10   | Bonding | \$80,000    | \$80,000    | \$80,000    | \$0         | \$0         |

| Project Name                                   | Project Description                                                                                                                                                    | Life | Source  | FY 2026     | FY 2027     | FY 2028     | FY 2029     | FY 2030     |
|------------------------------------------------|------------------------------------------------------------------------------------------------------------------------------------------------------------------------|------|---------|-------------|-------------|-------------|-------------|-------------|
| <b>Public Works</b>                            |                                                                                                                                                                        |      |         |             |             |             |             |             |
| <b>Paving, Sidewalks, and Stormwater</b>       |                                                                                                                                                                        |      |         |             |             |             |             |             |
| Street Paving                                  | Ongoing needs, general maintenance and up keep                                                                                                                         | 20   | Bonding | \$2,100,000 | \$2,100,000 | \$2,100,000 | \$2,100,000 | \$2,100,000 |
| Handicap Curb Cuts                             | Ongoing needs, general maintenance and up keep                                                                                                                         | 20   | Bonding | \$200,000   | \$200,000   | \$200,000   | \$200,000   | \$200,000   |
| Curbs                                          | Repair or replacement of curbing throughout the city                                                                                                                   | 20   | LOCIP   | \$100,000   | \$100,000   | \$100,000   | \$100,000   | \$100,000   |
| Road Patch/Pave                                | Ongoing needs, general maintenance and up keep                                                                                                                         | 20   | LOCIP   | \$100,000   | \$100,000   | \$100,000   | \$100,000   | \$100,000   |
| Sidewalks                                      | Ongoing needs, general maintenance and up keep                                                                                                                         | 10   | LOCIP   | \$300,000   | \$300,000   | \$300,000   | \$300,000   | \$300,000   |
| Storm Sewers                                   | Ongoing needs, general maintenance and up keep                                                                                                                         | 20   | LOCIP   | \$0         | \$100,000   | \$100,000   | \$100,000   | \$100,000   |
| <b>Citywide Facility Improvements</b>          |                                                                                                                                                                        |      |         |             |             |             |             |             |
| Butler Buildings (2)                           | Building for storage of Bldg. Maint. Dept and add electricity etc. because we are removing the rented storage containers currently used that are not weather resistant | 20   | LOCIP   | \$80,000    | \$0         | \$0         | \$0         | \$0         |
| Compost/Butler Building                        | Repairs and/or renovations to the compost/butler building                                                                                                              | 20   | LOCIP   | \$40,000    | \$0         | \$0         | \$0         | \$0         |
| City Hall Chiller                              | Replacement of 15 year old City Hall Chiller (HVAC System). The current system is at the end of life.                                                                  | 20   | Bonding | \$500,000   | \$0         | \$0         | \$0         | \$0         |
| Parks & Rec Facility and Equipment Improvement | Renovations and repairs for the Park and Recreation facility including but not limited to HVAC System, boilers, and other necessary upgrades.                          | 20   | Bonding | \$125,000   | \$0         | \$0         | \$0         | \$0         |
| City Hall Bathrooms                            | Restoration of City Hall Bathrooms. This includes but not limited to piping, electrical, contamination clean up and other repairs as necessary.                        | 20   | Bonding | \$175,000   | \$0         | \$0         | \$0         | \$0         |
| General PD Facility Upgrades                   | Replacement of 20YR carpet, new alarm system & window repair/replacement                                                                                               | 20   | Bonding | \$200,000   | \$0         | \$0         | \$0         | \$0         |

| Project Name                          | Project Description                                                                                                                                                                                                                                     | Life | Source  | FY 2026     | FY 2027     | FY 2028   | FY 2029   | FY 2030   |
|---------------------------------------|---------------------------------------------------------------------------------------------------------------------------------------------------------------------------------------------------------------------------------------------------------|------|---------|-------------|-------------|-----------|-----------|-----------|
| General City Facility Upgrades        | General facility purchases, upgrades or repairs to City facilities including but not limited to asbestos, environmental assessments & remediation, HVAC, Ceilings, Lighting, Work Stations, Electrical, plumbing, and any other necessary improvements. | 20   | Bonding | \$200,000   | \$200,000   | \$200,000 | \$200,000 | \$200,000 |
| Collis Street Butler Building         | Building to house DPW Vehicles and offices for DPW Supervisors                                                                                                                                                                                          | 20   | Bonding | \$850,000   | \$0         | \$0       | \$0       | \$0       |
| Demolition of 28 and 32 Collis St.    | Old buildings being replaced by Butler Building. Buildings are in disrepair and need to be demolished                                                                                                                                                   | 20   | Bonding | \$0         | \$225,000   | \$0       | \$0       | \$0       |
| <b>Vehicle Purchases and Repairs</b>  |                                                                                                                                                                                                                                                         |      |         |             |             |           |           |           |
| DPW Passenger and Light Duty Vehicles | Purchase of new/used vehicles for City of West Haven                                                                                                                                                                                                    | 10   | Bonding | \$185,000   | \$265,000   | \$185,000 | \$625,000 | \$0       |
| DPW Vehicle Heavy Duty                | Purchase of new/used vehicles for City of West Haven                                                                                                                                                                                                    | 10   | Bonding | \$1,540,000 | \$2,280,000 | \$700,000 | \$200,000 | \$0       |
| <b>Equipment</b>                      |                                                                                                                                                                                                                                                         |      |         |             |             |           |           |           |
| DPW Equipment                         | General equipment for Public Works including but not limited to utility trailers, excavators, payloaders, UTV, Surf Rake, and other equipment as needed                                                                                                 | 10   | Bonding | \$1,145,000 | \$490,000   | \$582,500 | \$464,500 | \$375,000 |

| Project Name                 | Project Description                                                  | Life | Source  | FY 2026     | FY 2027   | FY 2028     | FY 2029   | FY 2030     |
|------------------------------|----------------------------------------------------------------------|------|---------|-------------|-----------|-------------|-----------|-------------|
| <b>Parks and Recreation</b>  |                                                                      |      |         |             |           |             |           |             |
| <b>Coastline and Beaches</b> |                                                                      |      |         |             |           |             |           |             |
| Beach Sand Management        | Ongoing needs, general maintenance and up keep                       | 5    | Bonding | \$500,000   | \$400,000 | \$400,000   | \$400,000 | \$400,000   |
| Coastal Resiliency           | Protection of wetlands and property from flooding and sea level rise | 10   | Bonding | \$2,000,000 | \$0       | \$1,000,000 | \$0       | \$1,000,000 |

| Project Name                         | Project Description                                                                                                                                       | Life | Source                | FY 2026   | FY 2027   | FY 2028   | FY 2029   | FY 2030   |
|--------------------------------------|-----------------------------------------------------------------------------------------------------------------------------------------------------------|------|-----------------------|-----------|-----------|-----------|-----------|-----------|
| <b>Police Department</b>             |                                                                                                                                                           |      |                       |           |           |           |           |           |
| <b>Technology</b>                    |                                                                                                                                                           |      |                       |           |           |           |           |           |
| Traffic control signal boxes         | Replacement and maintenance of approximately six intersections per year                                                                                   | 5    | Bonding               | \$250,000 | \$250,000 | \$250,000 | \$250,000 | \$250,000 |
| Body Cameras                         | 122 Body Camera's, lasers, and other equipment as required by the state.                                                                                  | 5    | Bonding               | \$0       | \$260,000 | \$270,400 | \$281,216 | \$292,465 |
| Computer Equipment Upgrade           | Computer and other equipment end of life replacements                                                                                                     | 5    | Bonding               | \$80,000  | \$82,000  | \$84,080  | \$86,243  | \$88,492  |
| Software Purchase                    | Purchase of software (incl. necessary hardware) including but not limited to PD Card reader upgrade, cyber security, Telestaff                            | 5    | Bonding               | \$200,000 | \$50,000  | \$50,000  | \$50,000  | \$50,000  |
| Server Infrastructure                | Public Safety Network upgrade of end of life servers for PD and camera system                                                                             | 5    | Bonding               | \$120,000 | \$120,000 | \$120,000 | \$120,000 | \$120,000 |
| Interview Room Recording Replacement | Axon System for 3 interview rooms                                                                                                                         | 5    | Bonding               | \$15,000  | \$15,000  | \$15,000  | \$15,000  | \$15,000  |
| Computer Intel Room/ Crime Lab       | City wide camera monitoring, Rekor, Speed Camera                                                                                                          |      | Capital Non-Recurring | \$50,000  | \$50,000  | \$50,000  | \$50,000  | \$50,000  |
| <b>Facilities</b>                    |                                                                                                                                                           |      |                       |           |           |           |           |           |
| Butler Building                      | Butler Buildings for storage at Parks Department and City Hall                                                                                            | 20   | Bonding               | \$400,000 | \$0       | \$0       | \$0       | \$0       |
| <b>Vehicle Purchases and Repairs</b> |                                                                                                                                                           |      |                       |           |           |           |           |           |
| Police Vehicle Replacements          | Continue the ongoing replacement plan of Police Department fleet. FY 2026 includes a replacement of six police patrol vehicles and two detective vehicles | 5    | Bonding               | \$536,780 | \$553,943 | \$571,502 | \$589,467 | \$614,642 |

| Project Name                         | Project Description                                                                                                                                       | Life | Source                | FY 2026   | FY 2027   | FY 2028   | FY 2029   | FY 2030   |
|--------------------------------------|-----------------------------------------------------------------------------------------------------------------------------------------------------------|------|-----------------------|-----------|-----------|-----------|-----------|-----------|
| <b>Police Department</b>             |                                                                                                                                                           |      |                       |           |           |           |           |           |
| <b>Technology</b>                    |                                                                                                                                                           |      |                       |           |           |           |           |           |
| Traffic control signal boxes         | Replacement and maintenance of approximately six intersections per year                                                                                   | 5    | Bonding               | \$250,000 | \$250,000 | \$250,000 | \$250,000 | \$250,000 |
| Body Cameras                         | 122 Body Camera's, lasers, and other equipment as required by the state.                                                                                  | 5    | Bonding               | \$0       | \$260,000 | \$270,400 | \$281,216 | \$292,465 |
| Computer Equipment Upgrade           | Computer and other equipment end of life replacements                                                                                                     | 5    | Bonding               | \$80,000  | \$82,000  | \$84,080  | \$86,243  | \$88,492  |
| Software Purchase                    | Purchase of software (incl. necessary hardware) including but not limited to PD Card reader upgrade, cyber security, Telestaff                            | 5    | Bonding               | \$200,000 | \$50,000  | \$50,000  | \$50,000  | \$50,000  |
| Server Infrastructure                | Public Safety Network upgrade of end of life servers for PD and camera system                                                                             | 5    | Bonding               | \$120,000 | \$120,000 | \$120,000 | \$120,000 | \$120,000 |
| Interview Room Recording Replacement | Axon System for 3 interview rooms                                                                                                                         | 5    | Bonding               | \$15,000  | \$15,000  | \$15,000  | \$15,000  | \$15,000  |
| Computer Intel Room/ Crime Lab       | City wide camera monitoring, Rekor, Speed Camera                                                                                                          |      | Capital Non-Recurring | \$50,000  | \$50,000  | \$50,000  | \$50,000  | \$50,000  |
| <b>Facilities</b>                    |                                                                                                                                                           |      |                       |           |           |           |           |           |
| Butler Building                      | Butler Buildings for storage at Parks Department and City Hall                                                                                            | 20   | Bonding               | \$400,000 | \$0       | \$0       | \$0       | \$0       |
| <b>Vehicle Purchases and Repairs</b> |                                                                                                                                                           |      |                       |           |           |           |           |           |
| Police Vehicle Replacements          | Continue the ongoing replacement plan of Police Department fleet. FY 2026 includes a replacement of six police patrol vehicles and two detective vehicles | 5    | Bonding               | \$536,780 | \$553,943 | \$571,502 | \$589,467 | \$614,642 |

| Project Name                       | Project Description                          | Life | Source  | FY 2026   | FY 2027 | FY 2028 | FY 2029  | FY 2030  |
|------------------------------------|----------------------------------------------|------|---------|-----------|---------|---------|----------|----------|
| <b>Emergency Reporting System</b>  |                                              |      |         |           |         |         |          |          |
| <b>Technology</b>                  |                                              |      |         |           |         |         |          |          |
| UPS Upgrade                        | Need to replace/upgrade UPS system at PD     | 5    | Bonding | \$30,000  | \$0     | \$0     | \$0      | \$6,000  |
| Computer Replacement               | Replace/Upgrade all computers/monitors       | 5    | Bonding | \$61,600  | \$0     | \$0     | \$61,600 | \$0      |
| UPS Battery Replacement            | Replace batteries at radio sites             | 5    | Bonding | \$36,800  | \$0     | \$0     | \$0      | \$36,800 |
| Fire Department Radio Upgrade      | Upgrade the FD radio system to Digital       | 5    | Bonding | \$250,000 | \$0     | \$0     | \$0      | \$0      |
| <b>Furniture replacement</b>       |                                              |      |         |           |         |         |          |          |
| Equipment, Fixtures, and Furniture | Replace & upgrade dispatch console furniture | 5    | Bonding | \$200,000 | \$0     | \$0     | \$0      | \$0      |

| Project Name                                  | Project Description                                                                                                                                                  | Life | Source                 | FY 2026      | FY 2027      | FY 2028      | FY 2029      | FY 2030 |
|-----------------------------------------------|----------------------------------------------------------------------------------------------------------------------------------------------------------------------|------|------------------------|--------------|--------------|--------------|--------------|---------|
| <b>Water Pollution Control Authority</b>      |                                                                                                                                                                      |      |                        |              |              |              |              |         |
| <b>Plant Treatment and Sewer Rehab</b>        |                                                                                                                                                                      |      |                        |              |              |              |              |         |
| Treatment Plant Incinerator                   | This is to begin rebuilding the WPCA incinerator. This will help reduce cost for the WPCA plant as costs keep increasing due to shipping sludge to other facilities. | 30   | Bonding                | \$4,500,000  | \$16,000,000 | \$16,000,000 | \$0          | \$0     |
| Outfall Reconstruction                        | End of Useful Life and Danger of Breaks, need replacement                                                                                                            | 15   | Bonding                | \$1,250,000  | \$9,000,000  | \$7,750,000  | \$0          | \$0     |
| Outfall Reconstruction                        | End of Useful Life and Danger of Breaks, need replacement                                                                                                            | 15   | FEMA Grant             | \$3,750,000  | \$28,250,000 | \$22,000,000 | \$0          | \$0     |
| Plant Hardening                               | Protection from 100 Year Storms, need protection                                                                                                                     | 20   | Bonding                | \$3,733,471  | \$0          | \$0          | \$0          | \$0     |
| Plant Hardening                               | Protection from 100 Year Storms, need protection                                                                                                                     | 20   | FEMA Grant             | \$9,266,529  | \$0          | \$0          | \$0          | \$0     |
| Consent Decree Order - EPA                    | Mandated Sewer Rehabilitation, Consent Decree                                                                                                                        | 20   | Clean Water Fund Loan  | \$9,280,000  | \$2,560,000  | \$0          | \$0          | \$0     |
| Consent Decree Order - EPA                    | Mandated Sewer Rehabilitation, Consent Decree                                                                                                                        | 20   | Clean Water Fund Grant | \$2,320,000  | \$640,000    | \$0          | \$0          | \$0     |
| Sewer Rehabilitation                          | Ongoing Pump Station Upgrades, Consent Decree                                                                                                                        | 20   | Clean Water Fund Loan  | \$22,400,000 | \$7,200,000  | \$3,640,000  | \$11,200,000 | \$0     |
| Sewer Rehabilitation                          | Ongoing Pump Station Upgrades, Consent Decree                                                                                                                        | 20   | Clean Water Fund Grant | \$5,600,000  | \$1,800,000  | \$660,000    | \$0          | \$0     |
| Odor control at Water Pollution Control Plant | Rehab odor control system which is non functional                                                                                                                    | 15   | Bonding                | \$1,000,000  | \$0          | \$0          | \$0          | \$0     |
| Aeration control upgrade                      | Need to replace existing controls and valves that are not functional                                                                                                 | 20   | Bonding                | \$2,000,000  | \$0          | \$0          | \$0          | \$0     |

| Project Name                           | Project Description                                                                                          | Life | Source  | FY 2026   | FY 2027   | FY 2028   | FY 2029 | FY 2030 |
|----------------------------------------|--------------------------------------------------------------------------------------------------------------|------|---------|-----------|-----------|-----------|---------|---------|
| <b>Vehicle Purchases and Repairs</b>   |                                                                                                              |      |         |           |           |           |         |         |
| WPCA Passenger and Light Duty Vehicles | Purchase/replacement of administrative pool vehicle and Utility Truck                                        | 10   | Bonding | \$0       | \$170,000 | \$0       | \$0     | \$0     |
| WPCA Vehicle Heavy Duty                | Replace 2002 E450 CCTV Truck/Replace 190WN Volvo Loader L50H2013 F350 Flatbed F550 utility Crane/F450 DUMP   | 10   | Bonding | \$675,000 | \$150,000 | \$115,000 | \$0     | \$0     |
| <b>Equipment</b>                       |                                                                                                              |      |         |           |           |           |         |         |
| Mowers and Other Equipment             | Replace Ex Mark Zero Turn Mower 60 Inch, Skid Steer/W 2 Attachments Sweeper, or other equipment as necessary | 10   | Bonding | \$0       | \$25,000  | \$100,000 | \$0     | \$0     |
| Safety Equipment                       | Upgrades to safety equipment at Pump Stations and Plants                                                     | 10   | Bonding | \$125,000 | \$0       | \$0       | \$0     | \$0     |

| Project Name             | Project Description                                                                                                                                                                                                                                                                                                      | Life | Source                | FY 2026   | FY 2027   | FY 2028   | FY 2029   | FY 2030   |
|--------------------------|--------------------------------------------------------------------------------------------------------------------------------------------------------------------------------------------------------------------------------------------------------------------------------------------------------------------------|------|-----------------------|-----------|-----------|-----------|-----------|-----------|
| <b>City Operations</b>   |                                                                                                                                                                                                                                                                                                                          |      |                       |           |           |           |           |           |
| <b>Digitization</b>      |                                                                                                                                                                                                                                                                                                                          |      |                       |           |           |           |           |           |
| Digitization             | Digitization of City files for archiving and storage                                                                                                                                                                                                                                                                     | 5    | Bonding               | \$180,000 | \$180,000 | \$180,000 | \$180,000 | \$180,000 |
| <b>Facilities</b>        |                                                                                                                                                                                                                                                                                                                          |      |                       |           |           |           |           |           |
| Capital Safety Equipment | City Hall safety equipment including but not limited to Handrails, Ladder/Railings, Gates, Floor Tiles and Other Improvements. This will ensure facilities are ADA/OSHA compliant                                                                                                                                        | 10   | Bonding               | \$38,000  | \$0       | \$0       | \$0       | \$0       |
| <b>Technology</b>        |                                                                                                                                                                                                                                                                                                                          |      |                       |           |           |           |           |           |
| Computers                | Ongoing replacement of City equipment including but not limited to desktops, laptops, printers, and other equipment as needed                                                                                                                                                                                            | 5    | Bonding               | \$30,000  | \$20,000  | \$20,000  | \$20,000  | \$20,000  |
| Core Network Switches    | The city Network Switches will be at end of life. Fortinet will no longer support us if we experience a switch failure. We will need to update all network work switches.                                                                                                                                                |      | Capital Non-Recurring | \$0       | \$0       | \$90,000  | \$0       | \$0       |
| Wireless Access Points   | Ongoing purchase and replacement of wireless access points in City facilities.                                                                                                                                                                                                                                           |      | Capital Non-Recurring | \$0       | \$0       | \$35,000  | \$0       | \$0       |
| APC/UPS                  | Many of the city APC/UPS is located inside our data center and IT closets throughout city buildings. All APC/UPS now have failing batteries and are no longer supported. In order to continue to provide shared IT operations during a power outage, we ask to have each unit replaced with a network monitored APC/UPS. |      | Capital Non-Recurring | \$20,000  | \$0       | \$0       | \$0       | \$0       |

| Project Name                               | Project Description                                                                                                                                                                                                                                                                                               | Life | Source                | FY 2026   | FY 2027  | FY 2028   | FY 2029  | FY 2030 |
|--------------------------------------------|-------------------------------------------------------------------------------------------------------------------------------------------------------------------------------------------------------------------------------------------------------------------------------------------------------------------|------|-----------------------|-----------|----------|-----------|----------|---------|
| Firewalls                                  | The city firewalls are at end of life/support. In order to continue protecting our computers, servers, and data. We need to update the firewalls to manage our network traffic. We need to be able to block all unsolicited and unwanted incoming network traffic to help prevent any sort of ransomware attacks. |      | Capital Non-Recurring | \$0       | \$0      | \$135,000 | \$0      | \$0     |
| VoIP server firmware and 2008/server       | The city VoIP server firmware and 2008/server are outdated and will be updated in the year 2022. Many of the City IP desk phones are unsupported and experience defect issues daily. Due to no manufacturer warranty, we ask that we replace all Mitel IP phones.                                                 |      | Capital Non-Recurring | \$90,000  | \$0      | \$0       | \$0      | \$0     |
| Nutanix - AOS Pro Software Licensing       | The city Hypervisor server farm software will expires every 3 years and will need renewal                                                                                                                                                                                                                         |      | Capital Non-Recurring | \$0       | \$0      | \$65,000  | \$0      | \$0     |
| Hot Computing Disaster Recovery Site Build | The city will need hot disaster recovery site in an event our main site fails/Nutanix Cluster Upgrade                                                                                                                                                                                                             |      | Capital Non-Recurring | \$150,000 | \$0      | \$0       | \$0      | \$0     |
| Mitchell Humphrey Software upgrade         | ongoing upgrade to Mitchell Humphrey software. This will improve the functionality for of the City building permitting system. The City will also begin integration into other departments (i.e. health department)                                                                                               |      | Capital Non-Recurring | \$41,000  | \$41,000 | \$30,000  | \$31,000 | \$0     |
| Security Cameras                           | On-going City-wide camera replacement project to replace outdated camera's. This project will improve performance, scalability, and system integration.                                                                                                                                                           | 5    | Bonding               | \$0       | \$25,000 | \$25,000  | \$0      | \$0     |

| Project Name | Project Description | Life |
|--------------|---------------------|------|
|--------------|---------------------|------|

# West Haven City Council Notice of Special Meeting, April 3, 2025

## CITY OF WEST HAVEN FIRE DEPARTMENT ALLINGTOWN

| ACCOUNT #                       | DESCRIPTION                 | FY 25 ADOPTED BUDGET | FY25 FEBRUARY ACTUAL | FY25 PROJECTION    | FY 26 DEPT. REQUEST | FY 26 MAYOR'S RECOMM. | FY 26 vs FY25 % CHANGE |
|---------------------------------|-----------------------------|----------------------|----------------------|--------------------|---------------------|-----------------------|------------------------|
| 19524041 41100                  | TAX LEVY - CURRENT YEAR     | \$6,817,660          | \$6,493,890          | \$6,817,660        | \$7,381,311         | \$7,381,311           | 0.4%                   |
| <b>NON CURRENT TAXES</b>        |                             |                      |                      |                    |                     |                       |                        |
| 19524041 41200                  | TAX LEVY - PRIOR YEARS      | \$66,000             | \$80,684             | \$83,000           | \$66,000            | \$66,000              | 0.0%                   |
| 19524041 41300                  | TAX LEVY - SUSPENSE         | \$6,000              | \$5,145              | \$6,000            | \$6,000             | \$6,000               | 0.0%                   |
|                                 | <b>SUBTOTAL</b>             | <b>\$72,000</b>      | <b>\$85,830</b>      | <b>\$89,000</b>    | <b>\$72,000</b>     | <b>\$72,000</b>       | <b>0.0%</b>            |
| <b>INTEREST &amp; LIEN FEES</b> |                             |                      |                      |                    |                     |                       |                        |
| 19524041 41610                  | TAX INTEREST - CURRENT YEAR | \$22,000             | \$14,856             | \$15,000           | \$22,000            | \$22,000              | 0.0%                   |
| 19524041 41620                  | TAX INTEREST - PRIOR YEARS  | \$15,000             | \$42,346             | \$45,000           | \$15,000            | \$15,000              | 0.0%                   |
| 19524041 41630                  | TAX INTEREST - SUSPENSE     | \$7,000              | \$4,438              | \$7,000            | \$7,000             | \$7,000               | 0.0%                   |
|                                 | <b>SUBTOTAL</b>             | <b>\$44,000</b>      | <b>\$61,639</b>      | <b>\$67,000</b>    | <b>\$44,000</b>     | <b>\$44,000</b>       | <b>0.0%</b>            |
| 19520047 42900                  | MISCELLANEOUS FEES          | \$60,000             | \$66,305             | \$67,000           | \$60,000            | \$60,000              | 0.0%                   |
| 19520047 45130                  | FEMA GRANTS                 | \$66,000             | \$0                  | \$0                | \$0                 | \$0                   | -75.7%                 |
| 19520045 45231                  | PILOT-COLLEGES & HOSPITALS  | \$770,501            | \$735,873            | \$735,873          | \$721,465           | \$721,465             | 0.0%                   |
| 19520045 45249                  | MRSA - MOTOR VEHICLE/MV CAP | \$960,525            | \$1,153,143          | \$1,153,143        | \$1,105,591         | \$1,105,591           | 0.0%                   |
| 19520045 45290                  | STATE MISCELLANEOUS GRANTS  | \$21,515             | \$0                  | \$0                | \$21,515            | \$21,515              | 0.0%                   |
| 19520045 45340                  | SCCRWA-PILOT GRANT          | \$49,166             | \$49,567             | \$49,567           | \$49,166            | \$49,166              | 0.0%                   |
| 19520047 46720                  | POLICE/FD EXTRA DUTY        | \$4,000              | \$9,585              | \$14,377           | \$4,000             | \$4,000               | 0.0%                   |
| 19520047 47050                  | FD BUNDLE BILLING EMS       | \$4,000              | \$14,860             | \$22,290           | \$14,000            | \$14,000              | -90.0%                 |
| 19520047 47060                  | FD TRANSPORT INCOME         | \$36,000             | \$38,801             | \$58,201           | \$68,000            | \$68,000              | 0.0%                   |
| 19520047 47200                  | SALE OF PROPERTY            | \$0                  | \$6,600              | \$7,000            | \$0                 | \$0                   | 0.0%                   |
| 19520047 47380                  | INSURANCE REIMBURSEMENT     | \$0                  | \$0                  | \$0                | \$0                 | \$0                   | 0.0%                   |
| 19520047 47600                  | DONATIONS                   | \$100,000            | \$0                  | \$100,000          | \$100,000           | \$100,000             | 0.0%                   |
| 19520047 47900                  | MISCELLANEOUS               | 0                    | 4,220                | 6,330              | 49,000              | 49,000                | 100.0%                 |
|                                 | <b>NON TAX INCOME</b>       | <b>2,071,707</b>     | <b>2,078,954</b>     | <b>2,213,781</b>   | <b>2,192,737</b>    | <b>2,192,737</b>      | <b>-9.0%</b>           |
|                                 | <b>TOTAL INCOME</b>         | <b>\$9,005,367</b>   | <b>\$8,720,313</b>   | <b>\$9,187,441</b> | <b>\$9,690,048</b>  | <b>\$9,690,048</b>    | <b>-1.9%</b>           |

| ACCOUNT #      | DESCRIPTION                   | FY 25 ADOPTED BUDGET | FY25 FEBRUARY ACTUAL | FY25 PROJECTION  | FY 26 DEPT. REQUEST | FY 26 MAYOR'S RECOMM. | FY 26 vs FY25 % CHANGE |
|----------------|-------------------------------|----------------------|----------------------|------------------|---------------------|-----------------------|------------------------|
| 19500010 51000 | REGULAR WAGES                 | \$359,076            | \$132,532            | \$198,798        | \$383,400           | \$383,400             | 24.0%                  |
| 19500010 52100 | GAS HEATING                   | \$12,000             | \$5,412              | \$12,000         | \$12,000            | \$12,000              | -20.0%                 |
| 19500010 52110 | ELECTRICITY                   | \$17,000             | \$11,774             | \$17,000         | \$17,000            | \$17,000              | 0.0%                   |
| 19500010 52130 | WATER                         | \$198,000            | \$100,282            | \$198,000        | \$198,000           | \$198,000             | 0.0%                   |
| 19500010 52150 | TELEPHONE EXPENSE             | \$17,000             | \$14,120             | \$21,180         | \$20,000            | \$20,000              | 21.4%                  |
| 19500010 52330 | TRAINING AND EDUCATION        | \$31,000             | \$39,800             | \$45,000         | \$30,000            | \$30,000              | 0.0%                   |
| 19500010 52360 | BUSINESS EXPENSE              | \$17,000             | \$11,848             | \$17,000         | \$17,000            | \$17,000              | 6.3%                   |
| 19500010 52420 | FINANCIAL SERVICES            | \$15,000             | \$0                  | \$0              | \$115,000           | \$115,000             | -25.0%                 |
| 19500010 52530 | BUILDING MAINTENANCE/REPAIR   | \$12,000             | \$4,755              | \$12,000         | \$12,000            | \$12,000              | -40.0%                 |
| 19500010 52580 | EQUIPMENT MAINTENANCE         | \$65,000             | \$44,601             | \$65,000         | \$55,000            | \$55,000              | 8.3%                   |
| 19500010 52820 | PSYCHOLOGICAL TESTING         | \$24,000             | \$4,853              | \$24,000         | \$0                 | \$0                   | 50.0%                  |
| 19500010 TBD   | ANNUAL PHYSICALS AND TESTING  | \$0                  | \$0                  | \$0              | \$27,000            | \$27,000              | 100.0%                 |
| 19500010 53110 | OFFICE SUPPLIES               | \$6,000              | \$3,471              | \$6,000          | \$6,000             | \$6,000               | 0.0%                   |
| 19500010 53210 | AUTOMOTIVE FUEL & FLUIDS      | \$18,000             | \$11,553             | \$18,000         | \$19,000            | \$19,000              | 0.0%                   |
| 19500010 54032 | LAP PREM-ALLINGTN             | \$65,000             | \$49,518             | \$65,000         | \$65,000            | \$65,000              | 8.3%                   |
| 19500010 54110 | HEALTH INSURANCE PREMIUMS     | \$1,841,821          | \$1,140,924          | \$1,841,821      | \$2,000,000         | \$2,000,000           | 10.5%                  |
| 19500010 54120 | LIFE INSURANCE PREMIUMS       | \$35,000             | \$16,383             | \$35,000         | \$35,000            | \$35,000              | 12.9%                  |
| 19500010 54130 | FICA-CITY'S SHARE             | \$18,000             | \$9,727              | \$15,000         | \$28,000            | \$28,000              | -17.1%                 |
| 19500010 54140 | PENSION AND UNFUND. LIABILITY | \$2,700,000          | \$1,356,994          | \$2,700,000      | \$2,850,000         | \$2,850,000           | 6.3%                   |
| 19500010 54180 | HEART & HYPERTENSION          | \$23,000             | \$0                  | \$23,000         | \$23,000            | \$23,000              | -34.3%                 |
| 19500010 54192 | WORKERS COMP PREMIUM          | \$63,000             | \$48,428             | \$63,000         | \$63,000            | \$63,000              | -49.6%                 |
| 19500010 55160 | PERSONAL COMPUTERS            | \$48,500             | \$40,942             | \$48,500         | \$54,000            | \$54,000              | 14.1%                  |
| 19500010 55630 | RADIO EQUIPMENT               | \$10,000             | \$0                  | \$10,000         | \$10,000            | \$10,000              | -75.0%                 |
| 19500010 56010 | UNALLOCATED CONTINGENCY       | \$160,000            | \$0                  | \$160,000        | \$160,000           | \$160,000             | -8.6%                  |
| 19500010 56990 | MISCELLANEOUS                 | \$16,000             | \$1,027              | \$16,000         | \$16,000            | \$16,000              | 0.0%                   |
| 19500010 55900 | ALLINGTOWN CAPITAL PROJECTS   | \$0                  | \$0                  | \$0              | \$0                 | \$0                   | -100.0%                |
| 19500010 56175 | ADVANCE FUNDING OPEB TRUST    | 100,000              | 0                    | 100,000          | 250,000             | 250,000               | -14.9%                 |
|                | <b>TOTAL ADMINISTRATION</b>   | <b>5,871,396</b>     | <b>3,048,944</b>     | <b>5,711,299</b> | <b>6,465,400</b>    | <b>6,465,400</b>      | <b>-3.6%</b>           |

| ACCOUNT #      | DESCRIPTION               | FY 25 ADOPTED BUDGET | FY25 FEBRUARY ACTUAL | FY25 PROJECTION    | FY 26 DEPT. REQUEST | FY 26 MAYOR'S RECOMM. | FY 26 vs FY25 % CHANGE |
|----------------|---------------------------|----------------------|----------------------|--------------------|---------------------|-----------------------|------------------------|
| 19500030 51000 | REGULAR WAGES             | \$1,826,720          | \$1,263,374          | \$1,895,062        | \$1,838,448         | \$1,838,448           | 20.2%                  |
| 19500030 51500 | OVERTIME                  | \$480,000            | \$365,459            | \$548,189          | \$485,000           | \$485,000             | 0.0%                   |
| 19500030 51800 | SEPARATION PAY            | \$40,000             | \$0                  | \$40,000           | \$35,000            | \$35,000              | -11.1%                 |
| 19500030 51801 | WORKERS' COMP. PAY        | \$0                  | \$0                  | \$0                | \$0                 | \$0                   | 0.0%                   |
| 19500030 52150 | TELEPHONE EXPENSE         | \$310,000            | \$134,890            | \$310,000          | \$381,000           | \$381,000             | 1.6%                   |
| 19500030 52780 | UNIFORM ALLOWANCE         | \$26,500             | \$6,858              | \$26,500           | \$26,500            | \$26,500              | 1.9%                   |
| 19500030 53250 | TOOLS & MISC. EQUIPMENT   | \$60,000             | \$9,865              | \$60,000           | \$60,000            | \$60,000              | -14.3%                 |
| 19500030 53440 | MEDICAL SUPPLIES          | \$40,000             | \$13,295             | \$40,000           | \$40,000            | \$40,000              | 5.3%                   |
| 19500030 54130 | FICA-CITY'S SHARE         | \$70,000             | \$59,454             | \$91,000           | \$86,000            | \$86,000              | 16.7%                  |
| 19500030 54140 | PENSION - CITY'S SHARE    | \$92,000             | \$44,582             | \$92,000           | \$92,000            | \$92,000              | -44.6%                 |
| 19500030 55220 | TRUCKS                    | \$40,000             | -\$13,308            | \$20,000           | \$20,000            | \$20,000              | -84.9%                 |
| 19500030 56180 | EDUCATIONAL REIMBURSEMENT | \$148,750            | \$102,000            | \$148,750          | \$160,700           | \$160,700             | 29.1%                  |
|                | <b>TOTAL OPERATIONS</b>   | <b>\$3,133,970</b>   | <b>\$1,986,471</b>   | <b>\$3,271,501</b> | <b>\$3,224,648</b>  | <b>\$3,224,648</b>    | <b>1.4%</b>            |
|                | <b>TOTAL EXPENSES</b>     | <b>\$9,005,367</b>   | <b>\$5,035,415</b>   | <b>\$8,982,800</b> | <b>\$9,690,048</b>  | <b>\$9,690,048</b>    | <b>-1.9%</b>           |
|                | <b>ADMINISTRATION</b>     | <b>\$5,871,396</b>   | <b>\$3,048,944</b>   | <b>\$5,711,299</b> | <b>\$6,465,400</b>  | <b>\$6,465,400</b>    | <b>-3.6%</b>           |
|                | <b>OPERATIONS</b>         | <b>\$3,133,970</b>   | <b>\$1,986,471</b>   | <b>\$3,271,501</b> | <b>\$3,224,648</b>  | <b>\$3,224,648</b>    | <b>1.4%</b>            |
|                | <b>TOTAL EXPENSES</b>     | <b>\$9,005,367</b>   | <b>\$5,035,415</b>   | <b>\$8,982,800</b> | <b>\$9,690,048</b>  | <b>\$9,690,048</b>    | <b>-1.9%</b>           |

| CURRENT TAX CALCULATION                |               |  |  |  |               |               |       |
|----------------------------------------|---------------|--|--|--|---------------|---------------|-------|
| Net GL - Motor Vehicle                 | \$86,443,890  |  |  |  | \$73,705,957  | \$73,705,957  | 11.5% |
| Net GL - Real Estate/Personal Property | \$589,131,782 |  |  |  | \$870,804,419 | \$870,804,419 | 2.6%  |
| Net Grand List                         | \$675,575,672 |  |  |  | \$944,510,376 | \$944,510,376 | 3.7%  |
| Mill Rate - MV                         | 3.0           |  |  |  | 3.0           | 3.0           | 0.0%  |
| Mill Rate - R/E, PP                    | 11.32         |  |  |  | 8.43          | 8.43          | -2.5% |
| Gross Tax Levy - MV                    | \$259,332     |  |  |  | \$221,118     | \$221,118     | 11.5% |
| Gross Tax Levy - R/E, PP               | \$6,669,184   |  |  |  | \$7,340,164   | \$7,340,164   | 0.0%  |
| Gross Tax Levy                         | \$6,928,516   |  |  |  | \$7,561,282   | \$7,561,282   | 0.4%  |
| Collection Rate - MV                   | 98.4%         |  |  |  | 85.0%         | 85.0%         | 0.0%  |
| Collection Rate - R/E, PP              | 98.4%         |  |  |  | 98.0%         | 98.0%         | 0.0%  |
| Tax Levy - Current Year                | \$6,817,660   |  |  |  | \$7,381,311   | \$7,381,311   | 0.4%  |

- Through the critical revaluation factor and the collaborative work of both the Fire Commissioners and the Mayor's office, we were able to decrease the mill rate in Allingtown once again this year.
- A key note for this budget is that we have once again increased the investment and pay down of the pension liability for an amount positively above the Actuarially Defined Contribution (ADC) threshold.

## Summary of Capital Requests

| Project Name                         | Project Description                                                                                | Life | Source  | FY 2026   | FY 2027     | FY 2028     | FY 2029 | FY 2030 |
|--------------------------------------|----------------------------------------------------------------------------------------------------|------|---------|-----------|-------------|-------------|---------|---------|
| <b>Allingtown Fire Department</b>    |                                                                                                    |      |         |           |             |             |         |         |
| <b>Facilities</b>                    |                                                                                                    |      |         |           |             |             |         |         |
| Station Consolidation                | New station, consolidating 2 aging stations into 1 to meet ADA, NFPA, and other code requirements. | 20   | Bonding | \$0       | \$1,500,000 | \$1,500,000 | \$0     | \$0     |
| <b>Vehicle Purchases and Repairs</b> |                                                                                                    |      |         |           |             |             |         |         |
| Vehicles Replacement                 | Extend useful service life of 20 y/o pumper through refurbish                                      | 10   | Bonding | \$400,000 | \$0         | \$0         | \$0     | \$0     |
| <b>Technology</b>                    |                                                                                                    |      |         |           |             |             |         |         |
| Technology Equipment and Services    | Fixed Network Equipment for Digital conversion-AFD Share of WHFD conversion to digital             | 5    | Bonding | \$100,000 | \$0         | \$0         | \$0     | \$0     |



Submitted Photo

### Winning a two-fer!

The St. Mary's Varsity 8th grade team picked up two championships recently. They captured the Archdiocese of Hartford state title with a 49-45 overtime win. They also captured their third straight St. Mary's Basketball tournament title earlier in the day. The team has a record of 30-0 and will represent Connecticut in the New England regionals later this month. West Haven residents Braelyn Roldan, Ava Pellino and Finley Gunning are part of the team.

## Westies: *Winter seasons come to an end for teams*

Continued from page 20

Picard scored off an assist from Taryn Lattanzi. Lattanzi then scored an unassisted goal 3:46 later for a 2-1 West Haven / Sacred Heart Academy lead.

That advantage held until the middle of the third period at West Haven / Sacred Heart Academy goaltender Evelyn Twarowski made 48 saves in the game, including 16 in the middle period and 14 more in the third.

The season came to a crushing end for the West Haven boys basketball team. Looking to advance to the state semifinals, the 11th-seeded Westies were ousted on the road by No. 3 New London, 46-44.

The Westies battled back throughout the entire contest, but they could not pull ahead for good.

Trailing by five points in the second quarter, a 3-pointer by Aaron Johnson got West Haven within 18-16 with 2:42 remaining. Johnson hit another 3-pointer 41 seconds later to get his team within one point, but New London drained a 3-pointer with two seconds remaining in the first half to take a 25-19 lead over the Westies.

West Haven had its chances in the third quarter as well. With a chance to even the game, the Westies had a shot blocked, before Ja'Kha Little finally tied the game at 25 with 5:32 left in the third quarter.

West Haven again had a chance to take the lead, but another turnover gave possession back to New London.

Trailing 32-29 after three quarters, West Haven battled back.

Little got his team within 32-31, and after New London took a 39-32 lead, a 6-0 run by West Haven was capped by another basket by Little.

New London extended its lead to 44-39 with 2:19 left in regulation, but Little hit a 3-pointer with 30 seconds remaining to get West Haven within one point at 44-43.

West Haven never got closer, and a last ditch shot as time expired missed the mark as West

Haven saw its season come to an end.

The season continued for West Haven as the team traveled to play sixth-seeded Glastonbury. The Westies pulled away for a 63-49 second round victory.

West Haven was led by Kannan Morris with 19 points. Johnson added 16 points, Loshon Roman scored 13 points, and Little scored nine.

The Westies and Guardians were even at 23 at the half, before West Haven pulled away in the second half. West Haven held Glastonbury to eight points in the third quarter to take a six-point lead, and the Westies outscored Glastonbury by eight points in the final quarter.

Johnson scored six of his team's 14 third quarter points to get the Westies going in the second half. The Westies then sealed the game at the free throw line in the fourth quarter, draining 13 free throws.

Roman scored 11 of the team's 26 points in the fourth quarter, including a pair of 3-pointers and five free throws. Morris connected on three free throws in the fourth and had six points in the final eight minutes.

The season has come to a close for the West Haven girls basketball team. After posting an upset in the first round of the Class LL state tournament against Fairfield Ludlowe, the Westies again traveled to Fairfield to play No. 6 Fairfield Warde in the second round of the tournament.

Despite a valiant effort, No. 22 West Haven fell to Warde 44-41. The Westies conclude their season with a 12-11 overall record. Ella Morgan led the way for the Westies in the second round defeat with 11 points and 12 rebounds.

### Shore Haven scholarships

Shore Haven Jr. Baseball is accepting scholarship applicants from June 2025 high school seniors pursuing further education. The league will be awarding three scholarships in the amount of \$300 each in honor of Dave Terese, Sr., Mario J. Argentino plus the Joseph Morrell Sr. scholarship. All applicants must have participated in the league for two years.



Photos by Todd Dandelske

### Using the body

Madden Evangeliste puts the shoulder down to drive around a Fairfield-Warde Mustangs' defender.

WestieBlue.com



For all your West Haven sports, visit [www.westieblue.com](http://www.westieblue.com)

Complete coverage of all sports teams from Youth Sports to Alumni

Photos Videos Player of the Week WH Championship teams  
Future Westies Alumni Hall of Fame WH News and Notes  
Team Leaders Statistics Coaches Information Coaches Corner  
And more

Your Everything WEST HAVEN Sports site

Contact Mike Madera

Phone: (203) 530-1322

Email: [MikeWestieBlue@aol.com](mailto:MikeWestieBlue@aol.com)

**CALL YOUR AVON LADY**  
Looking for Avon? Call Phyllis Franco,  
(203) 932-9367.  
And I will drop off a brochure. Over 30 years' experience.  
Friendly Service.

**West Haven Elk's Lodge**  
Hall Rentals  
150 person capacity.  
Low Prices.  
Bar and Kitchen  
facilities available.

**CARE GIVER IN WEST HAVEN**

Two minutes from bus stop, 2 or 3 days per week. \$17/hour. Call 203-508-3672.

**Buy It! Sell It! Rent It! Find It!**  
Try West Haven Voice Classifieds  
Call (2030) 934-6397 for more details.

## West Haven Eviction Warehouse Auction

**Notice West Haven Eviction Warehouse Auction**

Notice-Below is a list of names and addresses of owners of clothing and household supplies removed by a CT State Marshal following a lawful eviction in West Haven. Pursuant to CT General Statute section 47a – 42c, these goods will be auctioned off on Friday, April 11, 2025, at 10am, at the storage warehouse for Public Works located at 135 Wood Street- Bay 3 West Haven, CT 06516.

Prior to the auction, goods may be claimed and picked up by appointment only. Please call 203-937-3585 to schedule an appointment.

The deadline is noon Wednesday, April 9, 2025. Proper identification is required to claim goods. A \$10.00 cash deposit is required for all those who intend to place bids on bins.

The deposit may be returned to you after the auction. In cases where you have a winning bid, this deposit may be applied towards payment. Bidding for lots will begin at \$10.00 with the balance to be paid in cash immediately following the auction. The successful bidder must have all items removed by 12 noon. Stored items to be auctioned are to be sold in lots only.

**Names/addresses:**

- Eugene Onofrio, Diane Onofrio, 200 Oak Street Unit 187, West Haven, CT 06516
- Carlo Barbara, Jacqueline Barbara, 200 Oak Street Unit 213, West Haven, CT 06516
- Kowrie Miller, 156 Bull Hill Lane Unit A4, West Haven, CT 06516
- Anthony Perrone, 405 Main Street Unit 11, West Haven, CT 06516

**TAX SERVICE**  
More changes in tax laws affect your 2024 taxes!  
Let me help you get your refunds!!!!  
Over 40 years preparing taxes in a professional, timely, and cost-efficient manner!  
No waiting with pick-up and drop-off ser-



**The Family Restaurant**  
Breakfast - Lunch - Dinner  
Try Our Omelettes - Starting at \$5.00!

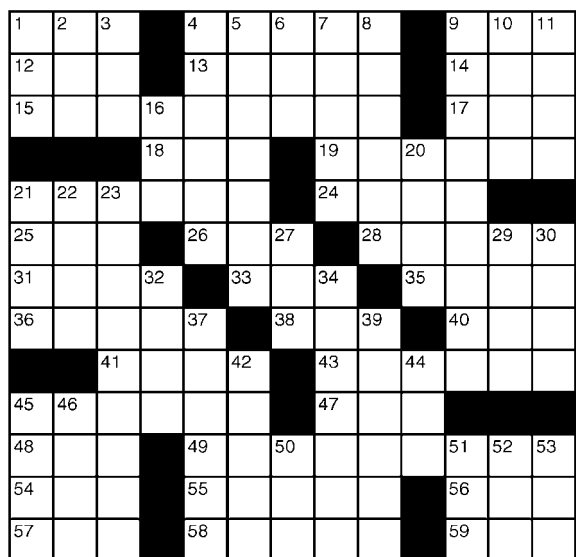
**Our Menu Includes:**  
Salads, Grinders, Wraps, Burgers, Pasta, Greek Items  
*Dine In or Take Out*

**LUNCH SPECIAL**  
FREE COFFEE or SODA  
WITH PURCHASE OF A SUB OR CLUB SANDWICH

**142 Campbell Ave**  
**(203) 934-4407**  
Open at 7 am

## King Crossword

- ACROSS**
- 1 Menagerie
  - 4 Embedded spies
  - 9 "Frontline" ailer
  - 12 Year in Spain
  - 13 Empathic words
  - 14 Land in la mer
  - 15 Unfortunate soul
  - 17 "Wham!"
  - 18 Ga. neighbor
  - 19 Tabloid subjects
  - 21 Cal — (baseball's "Iron Man")
  - 24 Scored 100 on
  - 25 Buckeyes' sch.
  - 26 Crater edge
  - 28 Succinct
  - 31 Shakespeare title starter
  - 33 LAPD alert
  - 35 Peruse
  - 36 Sasha's sister
  - 38 With it, once
- DOWN**
- 40 Summer mo.
  - 41 Norms (Abbr.)
  - 43 In a morose way
  - 45 Concludes by
  - 47 Tank filler
  - 48 Zodiac cat
  - 49 Precinct canine
  - 54 Fiddle stick
  - 55 Ten — (long odds)
  - 56 Flying saucer
  - 57 New England cape
  - 58 Trudges
  - 59 Apply cream
  - 1 Writer Jong
  - 8 Choose
  - 9 Fantasy
  - 10 Shapeless mass
  - 11 Stitches
  - 16 '60s Atty. General
  - 20 Lusty look
  - 21 Meander
  - 22 Actress Fisher
  - 23 Earns
  - 27 Speedometer stat
  - 29 Biblical king
  - 30 Jittery
  - 32 Poses
  - 34 Imploring
  - 37 Conforms
  - 39 Locales
  - 42 Pub seat
  - 44 Employ
  - 45 Exile isle
  - 46 Inert gas
  - 50 Brit's restroom
  - 51 Flop
  - 52 One — kind
  - 53 Sailor



© 2025 King Features Synd., Inc.

## MAGIC MAZE • — BARN

C J H E B Y V T Q O L I G D B  
Y (T O B A C C O) W T R Y P M D  
K I F D B N Y W U S R Q O M N  
K I F D B Z I C X I W U S Q A  
O N L J H P F D A D R C A Y L  
W V T S Q E E D E T O P N L G  
K I H F E C H E B S T Z Y K N  
W V E U S C S T H S I L G N E  
R Q P L T R N H I S N A E A W  
M L J U O I O T A T O P R B E  
H F D H E P L E R B M A G D N

Find the listed words in the diagram. They run in all directions forward, backward, up, down and diagonally. Unlisted clue hint: *Relating to the Netherlands*

|         |         |             |         |
|---------|---------|-------------|---------|
| Bank    | Gambrel | New England | Sheep   |
| Cattle  | Hop     | Pole        | Tithe   |
| Dairy   | Horse   | Potato      | Tobacco |
| English | Monitor | Raised in a |         |

© 2025 King Features Syndicate, Inc. All rights reserved.

## Weekly SUDOKU

|   |   |   |   |   |   |   |   |
|---|---|---|---|---|---|---|---|
| 2 |   | 8 | 4 |   |   | 1 | 3 |
| 8 | 4 | 1 | 5 | 7 |   |   |   |
| 3 | 7 | 9 | 6 | 1 | 2 | 4 | 5 |
|   |   | 9 |   |   |   | 8 |   |
|   | 8 | 5 |   |   |   | 7 | 2 |
|   |   | 2 | 7 |   |   |   | 4 |
| 2 |   | 8 |   | 5 |   | 1 | 3 |
|   |   | 4 | 2 | 9 |   |   | 6 |
| 6 |   |   |   |   |   | 2 |   |

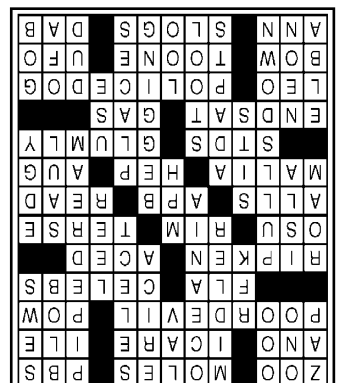
Place a number in the empty boxes in such a way that each row across, each column down and each small 9-box square contains all of the numbers from one to nine.

**DIFFICULTY THIS WEEK: ♦♦**

♦ Moderate ♦♦ Challenging  
♦♦♦ HOO BOY!

© 2025 King Features Synd., Inc.

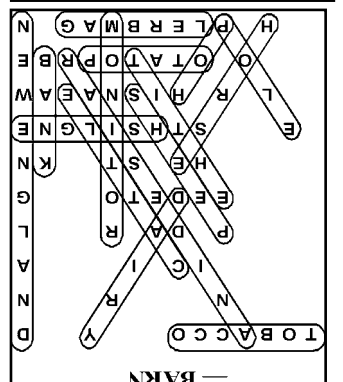
## Answers to this week's puzzles



Solution time: 22 mins.

Answers

## King Crossword



Answers

**Weekly SUDOKU**

|   |   |   |   |   |   |   |   |   |
|---|---|---|---|---|---|---|---|---|
| 5 | 2 | 6 | 8 | 4 | 9 | 7 | 1 | 3 |
| 8 | 4 | 1 | 5 | 7 | 3 | 6 | 2 | 9 |
| 3 | 7 | 9 | 6 | 1 | 2 | 4 | 5 | 8 |
| 6 | 5 | 3 | 6 | 1 | 9 | 7 | 2 | 4 |
| 9 | 6 | 2 | 7 | 8 | 5 | 3 | 4 | 1 |
| 4 | 8 | 5 | 3 | 6 | 1 | 9 | 7 | 2 |
| 7 | 1 | 3 | 9 | 2 | 4 | 8 | 6 | 5 |
| 2 | 9 | 8 | 4 | 5 | 6 | 1 | 3 | 7 |
| 1 | 3 | 4 | 2 | 9 | 7 | 5 | 8 | 6 |
| 6 | 5 | 7 | 1 | 3 | 8 | 2 | 9 | 4 |



- GEOGRAPHY: Mount Everest is part of which mountain range?
- MOVIES: Which color film was the first to win an Academy Award for Best Picture?
- ASTRONOMY: Which planet in our solar system is believed to be the windiest?
- GENERAL KNOWLEDGE: Where is the U.S. Constitution stored?
- ANIMAL KINGDOM: What is a group of lemurs called?
- TELEVISION: Which city is the setting for the dramatic series "The Wire"?
- GEOLOGY: Which country has the most active volcanos?
- LITERATURE: Which character in a

Charles Dickens novel famously said, "Please, sir, I want some more?"  
9. ART: Which Dutch artist is considered a master of light and shadow, creating dramatic effects in paintings?  
10. SCIENCE: What is an ectothermic animal?

- Answers
1. The Himalayas.
  2. "Gone With the Wind."
  3. Neptune.
  4. The National Archives.
  5. A conspiracy.
  6. Baltimore, Maryland.
  7. Indonesia.
  8. Title character in "Oliver Twist".
  9. Rembrandt.
  10. Cold-blooded.
- (c) 2025 King Features Synd., Inc.



## **Please Join Us for A Steeple Rededication Ceremony**

**After many years of work, the Steeple on First Congregational Church in the Center of the West Haven Green has been restored to its original beauty. Come and celebrate with us!**

**Date: Sunday, April 6, 2025**

**Ceremony Timeline:**

**10:30 a.m. Church Service (Sanctuary)**

**11:45 a.m. Rededication Service  
(Sanctuary & Outside)**

**Join us afterwards for lunch in  
Fellowship Hall!**

**Local and State Officials will be in attendance to share their comments about this historic landmark.**



Photos by Todd Dandelske

Above --Will Lopes scored 60 points over the Westies' Quarterfinal win over Trumbull and the Semifinal 38-35 loss to Oxford in the CIAC Playoffs. Middle -- Ja'Kha Little goes for the layup against New London in the CIAC Quarterfinals. Below -- West Haven Hockey celebrated Senior Night prior to their 2-1 win versus New Milford.

## Westies finish winter seasons

The West Haven boys hockey team has run into some tough luck this season. That hard luck continued into the postseason.

After battling back to tie the game with just under four minutes remaining, No. 10 West Haven watched as No. 7 Hand scored twice in the final 19 seconds of the third period to top the Westies 5-3 in the opening round of the Division II state tournament.

West Haven finished the season 7-12-2.

Trailing 3-2 late in the third, Justin Bruno scored off an assist from Brody DiNuzzo with 3:42 remaining to even the game. With West Haven putting the pressure on late in the game, the puck game down the ice the other way, deflected in front, where Hand's Matthew Gervais picked up the loose puck and scored the eventual winner with 19 seconds to go.

The Tigers added an insurance goal 11 seconds later to seal the 5-3 win over West Haven.

The loss overshadowed the early lead for the Westies as they withstood an early charge from Hand, then took a 2-0 first period lead. Both West Haven goals came off Hand turnovers.

Theo Diakomis gave West Haven a 1-0 lead 4:20 into the contest when he picked up the loose puck and quickly slid the puck in the net. Just 1:28 later, Josh Rodrigue followed suit, and West Haven had all the momentum.

Anthony Albino then helped turn the game around for Hand as he scored the first of his two goals 1:07 after the Rodrigue tally to get the Tigers in striking distance.

The Tigers had the better opportunities in the second period and took a 3-2 lead on goals by Ryan Wood and Albino 1:07 apart.

West Haven had its chances in the third period, but Hand goaltender William Diana denied DiNuzzo from the slot 6:07 in, and turned aside a point-blank shot by Bruno with a pad save with 4:31 to go.

The season has come to an end for the West Haven/Sacred Heart Academy girls hockey team. Traveling to play second-seeded New Canaan, the Westie Sharks were half of a period away from advancing to the semifinals of the state tournament.

New Canaan showed why it is among the top teams in the state.

Scoring twice in the last 7:48 of the game, New Canaan rallied to defeat No. 7 West Haven / Sacred Heart Academy, 3-2 in Darien. With the loss, the Westie Sharks end the season with a record of 16-8.

Trailing 1-0, West Haven / Sacred Heart Academy went to work and took a 2-1 lead after one period of play.

Just 49 seconds after New Canaan got on the board, West Haven / Sacred Heart Academy evened the game when Alessandra

See Westies, page 17

