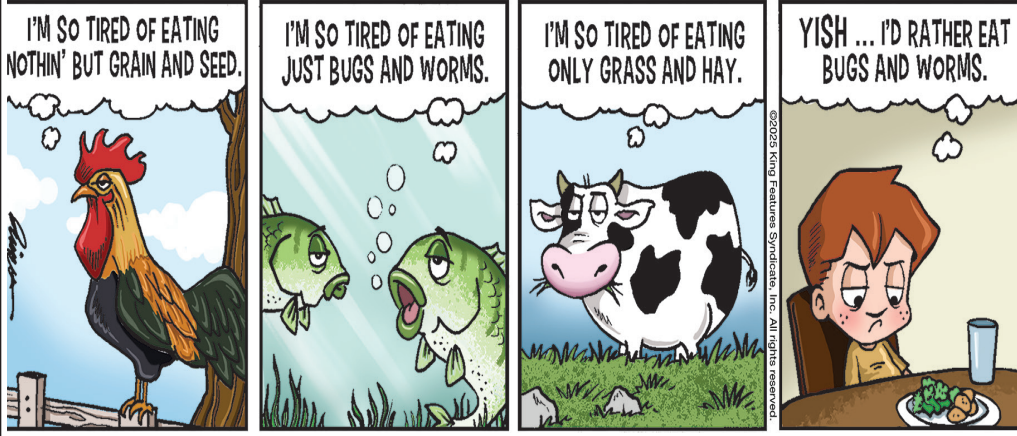


March 24, 2025 Posting Date

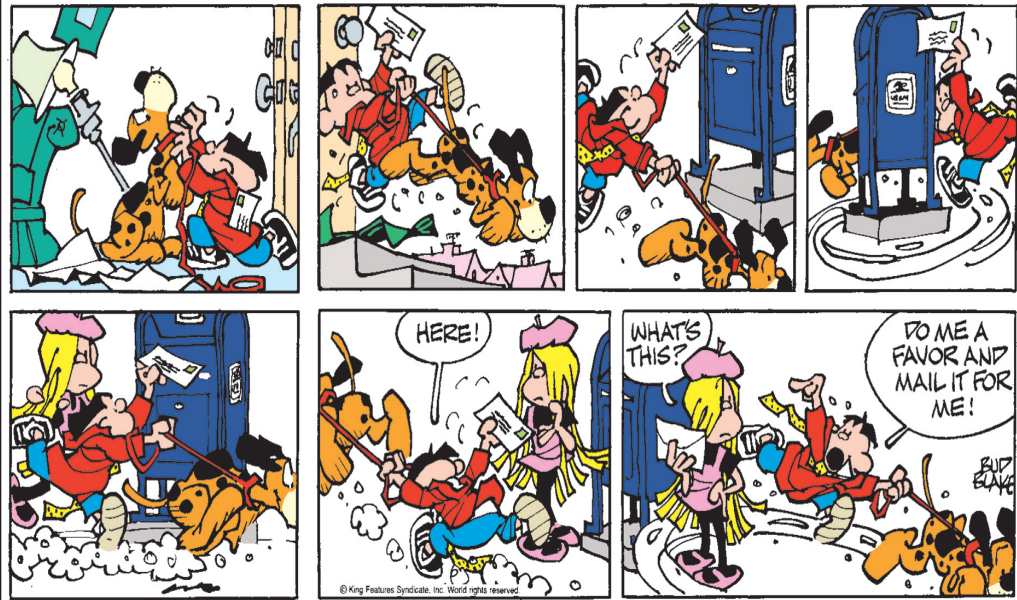
### Amber Waves

by Dave T. Phipps



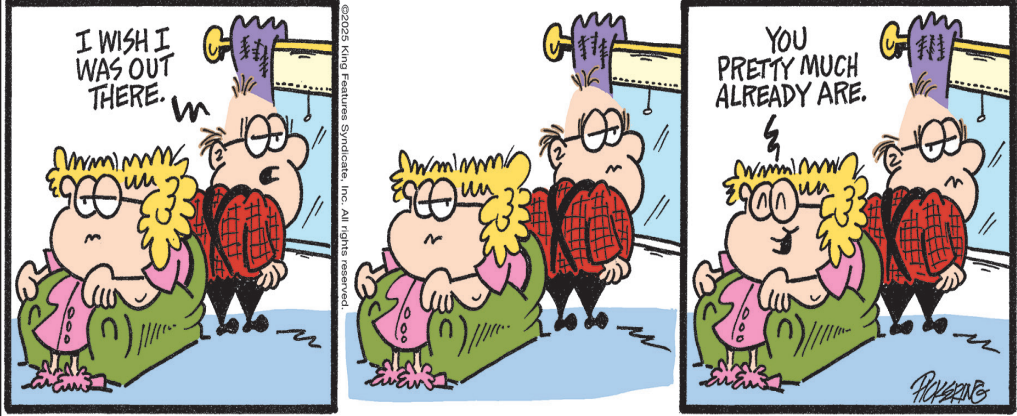
### TIGER

by BUD BLAKE



### The Spats

by Jeff Pickering



## King Crossword

#### ACROSS

- 1 Menagerie
- 4 Embedded spies
- 9 "Frontline" ailer
- 12 Year in Spain
- 13 Empathic words
- 14 Land in la mer
- 15 Unfortunate soul
- 17 "Wham!"
- 18 Ga. neighbor
- 19 Tabloid subjects
- 21 Cal — (baseball's "Iron Man")
- 24 Scored 100 on
- 25 Buckeyes' sch.

1	2	3	4	5	6	7	8	9	10	11	
12			13						14		
15			16						17		
			18			19		20			
21	22	23				24					
25			26		27		28		29	30	
31			32		33		34		35		
36			37		38		39		40		
			41		42		43		44		
45	46					47					
48			49		50				51	52	53
54			55						56		
57			58						59		

- 26 Crater edge
- 28 Succinct
- 31 Shakespeare title starter
- 33 LAPD alert
- 35 Peruse
- 36 Sasha's sister
- 38 With it, once
- 40 Summer mo.
- 41 Norms (Abbr.)
- 43 In a morose way
- 45 Concludes by
- 47 Tank filler
- 48 Zodiac cat
- 49 Precinct canine

- 54 Fiddle stick
- 55 Ten — (long odds)
- 56 Flying saucer
- 57 New England cape
- 58 Trudges
- 59 Apply cream

- 5 South Pacific region
- 6 Restroom, for short
- 7 Writer Jong
- 8 Choose
- 9 Fantasy
- 10 Shapeless mass
- 11 Stitches
- 16 '60s Atty. General
- 20 Lusty look
- 21 Meander
- 22 Actress Fisher
- 23 Earns

- 27 Speedometer stat
- 29 Biblical king
- 30 Jittery
- 32 Poses
- 34 Imploring
- 37 Conforms
- 39 Locales
- 42 Pub seat
- 44 Employ
- 45 Exile isle
- 46 Inert gas
- 50 Brit's restroom
- 51 Flop
- 52 One — kind
- 53 Sailor

#### DOWN

- 1 Microwave
- 2 Yoko from Tokyo
- 3 Tic-tac-toe win
- 4 Bette in "Beaches"

© 2025 King Features Synd., Inc.

## Trivia test

by Fifi Rodriguez

1. GEOGRAPHY: Mount Everest is part of which mountain range?
2. MOVIES: Which color film was the first to win an Academy Award for Best Picture?
3. ASTRONOMY: Which planet in our solar system is believed to be the windiest?
4. GENERAL KNOWLEDGE: Where is the U.S. Constitution stored?
5. ANIMAL KINGDOM: What is a group of lemurs called?
6. TELEVISION: Which city is the setting for the dramatic series "The Wire"?
7. GEOLOGY: Which country has the most active volcanos?
8. LITERATURE: Which character in a Charles Dickens novel famously said, "Please, sir, I want some more"?
9. ART: Which Dutch artist is considered a master of light and shadow, creating dramatic effects in paintings?
10. SCIENCE: What is an ectothermic animal?

© 2025 King Features Synd., Inc.

6	9	5	7	1	3	8	2	9	4
1	3	4	2	9	7	5	8	6	9
2	9	8	4	5	6	1	3	7	7
4	8	2	7	9	3	5	8	1	4
4	8	5	3	6	1	9	7	2	2
7	1	3	9	2	4	8	5	9	5
3	7	9	6	1	2	4	5	8	8
8	4	1	5	7	3	6	2	9	6
5	2	6	8	4	9	7	1	3	3

Answer

Z	O	M	O	L	E	S	P	B	S		
A	N	O	I	C	A	R	E	I	L	E	
P	O	R	T	E	R	I	L	L	P	O	W
F	L	A	C	E	L	E	S				
R	I	P	K	E	N	A	C	E	D		
S	O	U	R	I	M	T	E	R	S	E	
A	L	S	A	P	B	R	E	A	D		
M	A	L	I	A	H	E	P	A	U	G	
S	T	D	S	G	L	U	M	L	L	Y	
E	N	D	S	A	T	G	A	S			
L	E	O	P	O	L	I	C	O	D	O	G
B	O	M	T	O	N	O	E				
D	A	B									

Solution time: 22 mins.

Answers

## King Crossword

### Weekly SUDOKU

	2	8	4				1	3
8	4	1	5	7				
3	7	9	6	1	2	4	5	
		9				8		
	8	5					7	2
		2	7				4	
2	8		5		1	3		
		4	2	9				6
6					2			

Place a number in the empty boxes in such a way that each row across, each column down and each small 9-box square contains all of the numbers from one to nine.

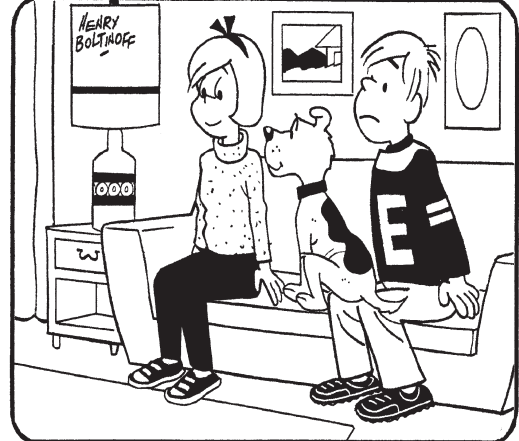
#### DIFFICULTY THIS WEEK: ♦♦

- ♦ Moderate
- ♦♦ Challenging
- ♦♦♦ HOO BOY!

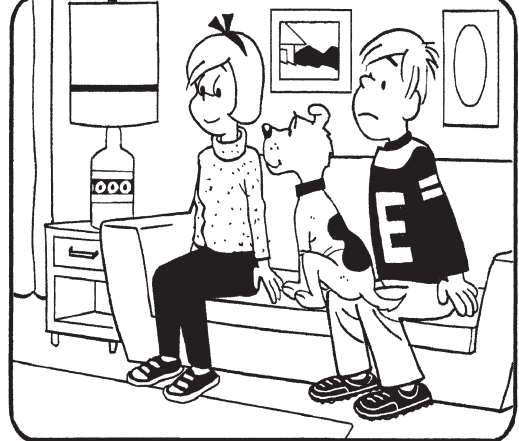
© 2025 King Features Synd., Inc.

### HOCUS-FOCUS

BY HENRY BOLTINOFF



Find at least six differences in details between panels.



Differences: 1. Drawer handle is different. 2. Picture is reversed. 3. Stripes on sleeve are higher. 4. Spot on dog's back is smaller. 5. Curtain is shorter. 6. Design on lamp is different.

1. The Himalayas; 2. "Gone With the Wind"; 3. Neptune; 4. The National Archives; 5. A conspiracy; 6. Baltimore, Maryland; 7. Indonesia; 8. Title character in "Oliver Twist"; 9. Rembrandt; 10. Cold-blooded

### Trivia Test Answers